

Xylitol

Catalog No: tcsc2987



Available Sizes

Size: 1g

Size: 5g



Specifications

CAS No:

87-99-0

Formula:

$C_5H_{12}O_5$

Pathway:

Autophagy

Target:

Autophagy

Purity / Grade:

>98%

Solubility:

H₂O : ≥ 100 mg/mL (657.25 mM)

Alternative Names:

Xylite

Observed Molecular Weight:

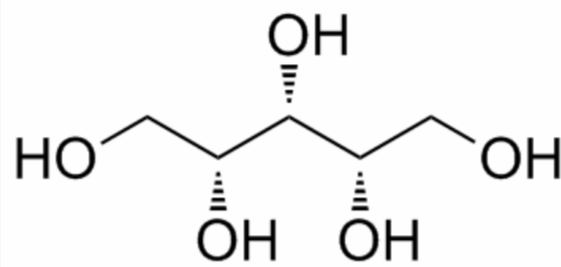
152.15

Product Description

Xylitol is a chemical categorized as a polyalcohol or sugar alcohol.

Target: Others

Xylitol is a chemical categorized as a polyalcohol or sugar alcohol (alditol). Xylitol has the formula $(\text{CHOH})_3(\text{CH}_2\text{OH})_2$ and is an achiral isomer of pentane-1,2,3,4,5-pentol. Xylitol is used as a diabetic sweetener which is roughly as sweet as sucrose with 33% fewer calories. Unlike other natural or synthetic sweeteners, xylitol is actively beneficial for dental health by reducing caries to a third in regular use and helpful to remineralization. Xylitol is naturally found in low concentrations in the fibers of many fruits and vegetables, and can be extracted from various berries, oats, and mushrooms, as well as fibrous material such as corn husks and sugar cane bagasse and birch.



All products are for RESEARCH USE ONLY. Not for diagnostic & therapeutic purposes!