

Doxepin (Hydrochloride)

Catalog No: tcsc2972



Available Sizes

Size: 1g

Size: 5g

Size: 10g



Specifications

CAS No:

1229-29-4

Formula:

$C_{19}H_{22}ClNO$

Pathway:

Neuronal Signaling

Target:

Serotonin Transporter

Purity / Grade:

>98%

Solubility:

DMSO : ≥ 100 mg/mL (316.62 mM); H₂O : ≥ 50 mg/mL (158.31 mM)

Observed Molecular Weight:

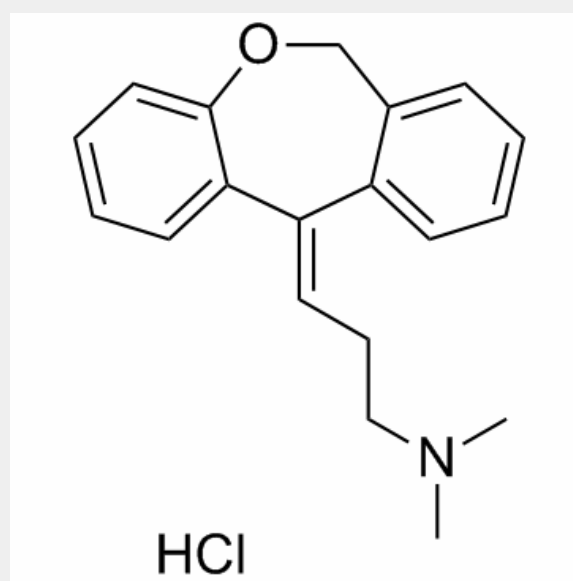
315.84

Product Description

Doxepin HCl is a tricyclic antidepressant that is marketed worldwide.

Target: SSRIs

Doxepin inhibits the reuptake of serotonin and norepinephrine and acts as a antagonist at various serotonergic, adrenergic, muscarinic, dopaminergic and histaminergic receptors [1]. In the doxepin-treated patients who completed the study (N = 20, 47.6+/- 11.3), medication significantly increased sleep efficiency after acute (night 1, p



All products are for RESEARCH USE ONLY. Not for diagnostic & therapeutic purposes!