

# Exatecan

Catalog No: tcsc2951



## Available Sizes

**Size:** 1mg

**Size:** 5mg

**Size:** 10mg



## Specifications

**CAS No:**

171335-80-1

**Formula:**

$C_{24}H_{22}FN_3O_4$

**Pathway:**

Cell Cycle/DNA Damage

**Target:**

Topoisomerase

**Purity / Grade:**

>98%

**Solubility:**

10 mM in DMSO

**Alternative Names:**

DX-8951

**Observed Molecular Weight:**

435.45

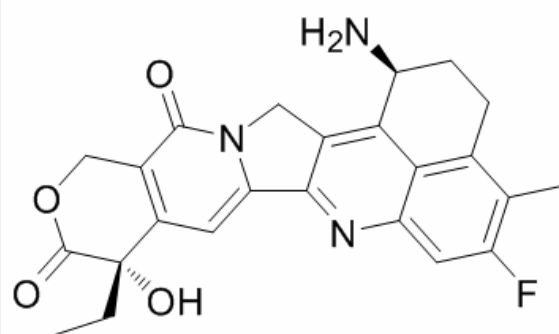
## Product Description

Exatecan is a water soluble **topoisomerase I** inhibitor, with an **IC<sub>50</sub>** of 2.2 μM (0.975 μg/mL), and can be used in cancer research.

IC50 & Target: IC50: 2.2 μM (topoisomerase I)<sup>[1]</sup>

**In Vitro:** Exatecan is a potent topoisomerase I inhibitor, with an IC<sub>50</sub> of 0.975 μg/mL. Exatecan Mesylate (DX-8951f) significantly inhibits the proliferation of several cancer cell lines, with mean GI<sub>50</sub>s of 2.02 ng/mL, 2.92 ng/mL, 1.53 ng/mL, and 0.877 ng/mL for breast cancer cells, colon cancer cells, stomach cancer cells and lung cancer cells, respectively<sup>[1]</sup>. Exatecan Mesylate (DX-8951f) displays cytotoxic activities against PC-6, PC-6/SN2-5 cells, with mean GI<sub>50</sub>s of 0.186 and 0.395 ng/mL, respectively. Exatecan Mesylate (34 nM) stabilizes DNA-TopoI complexes in PC-6 and PC-6/SN2-5 cells<sup>[3]</sup>.

**In Vivo:** Exatecan Mesylate (DX-8951f, 3.325-50 mg/kg, i.v.) exhibits antitumor activities in the mice model bearing tumor cells, without toxic death<sup>[1]</sup>. Exatecan Mesylate (15, 25 mg/kg, i.v.) highly inhibits MIA-PaCa, BxPC-3 primary tumor growth in the MIA-PaCa-2 early-stage model and early-stage model of BxPC-3. Exatecan Mesylate (15, 25 mg/kg, i.v.) also significantly suppresses BxPC-3 lymphatic metastasis and completely eliminates lung metastasis in the BxPC-3 late-stage cancer model<sup>[2]</sup>.



All products are for RESEARCH USE ONLY. Not for diagnostic & therapeutic purposes!