

Sertindole

Catalog No: tcsc2932



Available Sizes

Size: 10mg

Size: 50mg



Specifications

CAS No:

106516-24-9

Formula:

$C_{24}H_{26}ClFN_4O$

Pathway:

GPCR/G Protein;Neuronal Signaling;Autophagy;Neuronal Signaling;GPCR/G Protein

Target:

Dopamine Receptor;Dopamine Receptor;Autophagy;5-HT Receptor;5-HT Receptor

Purity / Grade:

>98%

Solubility:

DMSO : 50 mg/mL (113.39 mM; Need ultrasonic)

Alternative Names:

Lu 23-174

Observed Molecular Weight:

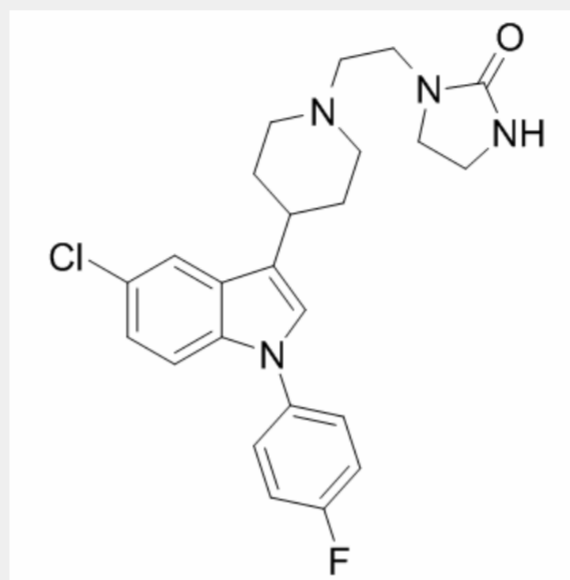
440.94

Product Description

Sertindole, a neuroleptic, is one of the newer antipsychotic medications available.

Target: Multi-target

In vitro studies showed that sertindole exerts a potent antagonism at serotonin 5-HT_{2A}, 5-HT_{2C}, dopamine D₂, and α 1 adrenergic receptors. Sertindole offers an alternative treatment option for refractory patients given its good EPS profile, favorable metabolic profile, and comparable efficacy to risperidone. Due to cardiovascular safety concerns, sertindole is available as a second-line choice for patients intolerant to other antipsychotic agents [1]. Sertindole should prove to be a very useful addition to the therapeutic options available for the treatment of psychotic disorders [2]. Sertindole improves negative symptoms, and is also effective for the treatment of neuroleptic-resistant schizophrenia. Sertindole is generally well tolerated and is associated with a low rate of extrapyramidal symptoms (EPS). Thus, sertindole is a useful option in the treatment of patients with schizophrenia [3].



All products are for RESEARCH USE ONLY. Not for diagnostic & therapeutic purposes!