

Cefepime (Dihydrochloride Monohydrate)

Catalog No: tcsc2841



Available Sizes

Size: 500mg

Size: 1g

Size: 5g



Specifications

CAS No:

123171-59-5

Formula:

$C_{19}H_{28}Cl_2N_6O_6S_2$

Pathway:

Anti-infection

Target:

Bacterial

Purity / Grade:

>98%

Solubility:

H₂O : ≥ 200 mg/mL (349.96 mM)

Observed Molecular Weight:

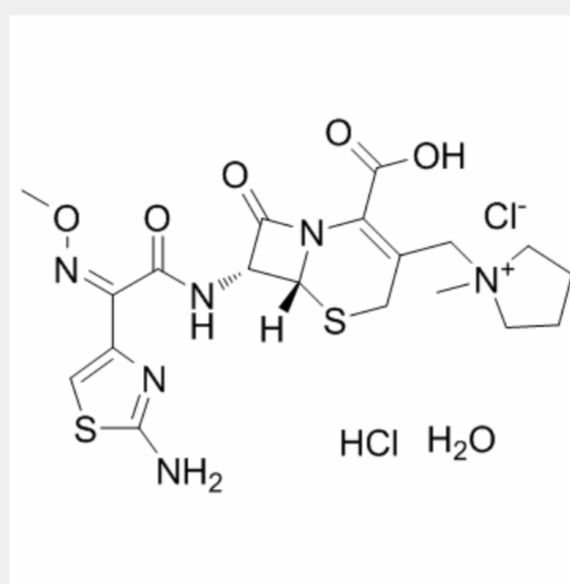
571.5

Product Description

Cefepime Dihydrochloride Monohydrate is a broad-spectrum cephalosporin with enhanced coverage against Gram-positive and Gram-negative bacteria.

Target: Antibacterial

Cefepime is an extended-spectrum parenteral cephalosporin antibiotic active in vitro against a broad spectrum of gram-positive and gram-negative aerobic bacteria. Cefepime dosing was 1-4 g/day (0.5-2.0 g twice daily) for adults; ceftazidime dosing was 1-6 g/day (0.5 g every 12 hours to 2.0 g every 8 hours). A limited number of cefepime-treated patients received 2 g every 8 hours. The median length of dosing for both cefepime and ceftazidime was 7 days [1]. Cefepime has a decreased propensity to induce beta-lactamases compared with other beta-lactam antibiotics. Cefepime has a pharmacokinetic disposition similar to that of other renally eliminated cephalosporins, with a half-life of approximately 2 hours. Cefepime has demonstrated clinical efficacy against a variety of infections, including urinary tract infections, pneumonia, and skin and skin structure infections. Cefepime is generally well tolerated [2].



All products are for RESEARCH USE ONLY. Not for diagnostic & therapeutic purposes!