

(R) -Lansoprazole

Catalog No: tcsc2820



Available Sizes

Size: 100mg

Size: 500mg



Specifications

CAS No:

138530-94-6

Formula:

$C_{16}H_{14}F_3N_3O_2S$

Pathway:

Membrane Transporter/Ion Channel

Target:

Proton Pump

Purity / Grade:

>98%

Solubility:

H₂O :

Alternative Names:

Dexlansoprazole

Observed Molecular Weight:

369.36

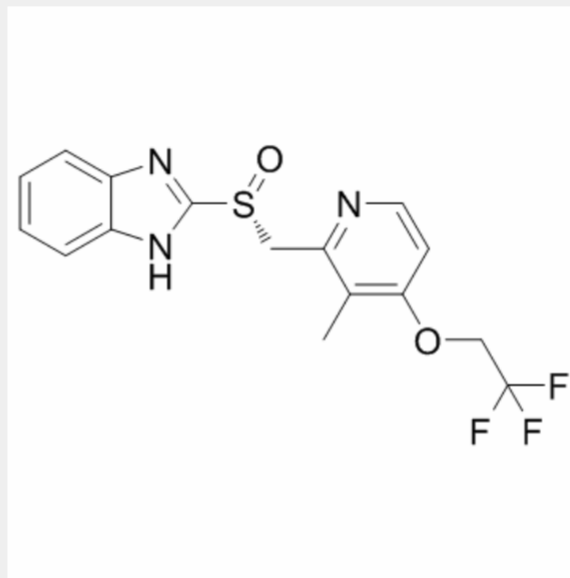
Product Description

(R)-Lansoprazole is a proton pump inhibitor which prevents the stomach from producing acid.

Target: Proton Pump

Lansoprazole sodium is sodium salt form of lansoprazole, lansoprazole, a substituted benzimidazole proton pump inhibitor, on pharmacokinetics and metabolism of theophylline has been studied in healthy adults given oral lansoprazole 30 mg once daily for 11 days. On Days 4 and 11 of 300 mg aminophylline was simultaneously administered orally and blood samples for theophylline analysis were taken over 24 h [1]. Patients in the lansoprazole group were significantly less likely to have a recurrence of ulcer complications than patients in the placebo group ($P=0.008$). There was no significant difference in mortality between the two groups [2]. lansoprazole (AG-1749) and omeprazole, were found to have significant activities against this organism. The activity of lansoprazole was comparable to that of bismuth citrate, with MICs ranging from 3.13 to 12.5 micrograms/ml, and fourfold more potent than that of omeprazole [3].

□



All products are for RESEARCH USE ONLY. Not for diagnostic & therapeutic purposes!