

Iohexol

Catalog No: tcsc2811



Available Sizes

Size: 100mg

Size: 500mg



Specifications

CAS No:

66108-95-0

Formula:

$C_{19}H_{26}I_3N_3O_9$

Pathway:

Autophagy;Autophagy

Target:

Autophagy;Mitophagy

Purity / Grade:

>98%

Solubility:

DMSO : ≥ 22 mg/mL (26.79 mM)

Observed Molecular Weight:

821.14

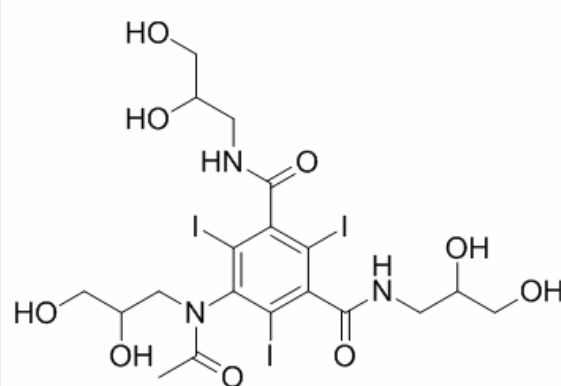
Product Description

Iohexol is a contrast agent.

Target: Others

Iohexol is a contrast agent. The osmolality of iohexol ranges from 322 mOsm/kg-approximately 1.1 times that of blood plasma-to 844 mOsm/kg, almost three times that of blood. Despite this difference, iohexol is still considered a low-osmolality contrast agent;

the osmolality of older agents, such as diatrizoate, may be more than twice as high. From Wikipedia.



All products are for RESEARCH USE ONLY. Not for diagnostic & therapeutic purposes!