

Kif15-IN-2

Catalog No: tcsc2698



Available Sizes

Size: 5mg

Size: 10mg

Size: 50mg

Size: 100mg



Specifications

CAS No:

672926-33-9

Formula:

$C_{20}H_{20}N_6O_4S$

Pathway:

Cytoskeleton;Cell Cycle/DNA Damage

Target:

Kinesin;Kinesin

Purity / Grade:

>98%

Solubility:

10 mM in DMSO

Observed Molecular Weight:

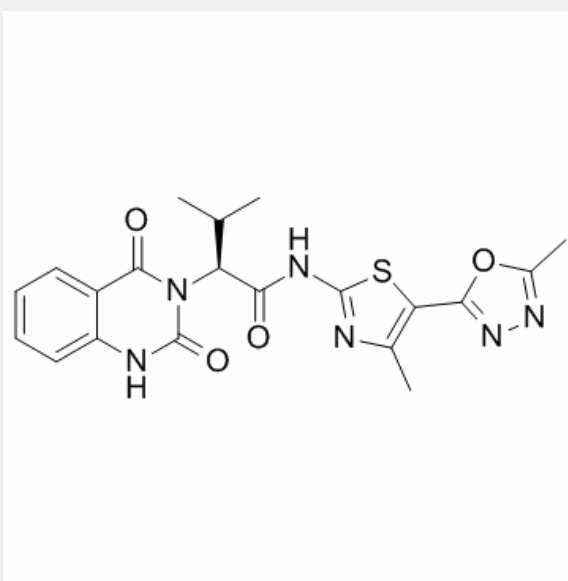
440.48

Product Description

Kif15-IN-2 is an inhibitor of the mitotic **kinesin Kif15**, and is used for the research of cellular proliferative diseases.

IC50 & Target: Kif15^[1]

In Vitro: Kif15-IN-2 (Compound 14) is an inhibitor of the mitotic kinesin Hs Kif15, with the potential activities against cellular proliferative diseases such as cancer, hyperplasias, restenosis, cardiac hypertrophy, immune disorders and inflammation^[1].



All products are for RESEARCH USE ONLY. Not for diagnostic & therapeutic purposes!