

Clomiphene (citrate)

Catalog No: tcsc2577



Available Sizes

Size: 1g

Size: 5g



Specifications

CAS No:

50-41-9

Formula:

$C_{32}H_{36}ClNO_8$

Pathway:

Others

Target:

Estrogen Receptor/ERR

Purity / Grade:

>98%

Solubility:

H₂O : 1 mg/mL (1.67 mM; Need ultrasonic); DMSO : ≥ 50 mg/mL (83.60 mM)

Alternative Names:

Clomifene citrate

Observed Molecular Weight:

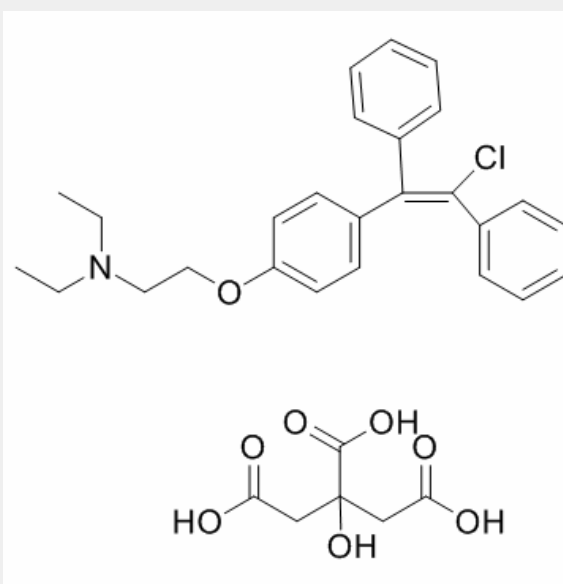
598.08

Product Description

Clomifene Citrate is a selective estrogen receptor modulator.

Target: Estrogen Receptor/ERR

Clomifene Citrate(CC) acted as an estrogen antagonist regardless of the concentration of E2 added together. In conclusion, CC acts as an estrogen agonist/antagonist via ER alpha in a coexisting estrogen concentration-dependent way whereas it acts as an estrogen antagonist via ER beta whether or not estrogen is present [1]. Clomiphene was effective in increasing pregnancy rate compared to placebo (OR 5.8, 95% CI 1.6 to 21.5) as was clomiphene plus dexamethasone treatment (OR 9.46, 95% CI 5.1 to 17.7) compared to clomiphene alone. A significant improvement in the pregnancy rate was reported for clomiphene plus combined oral contraceptives versus clomiphene alone. No evidence of a difference in effect on pregnancy rate was found with any of the other comparisons [2].



All products are for RESEARCH USE ONLY. Not for diagnostic & therapeutic purposes!