

Scopine

Catalog No: tcsc2570



Available Sizes

Size: 10mg

Size: 50mg

Size: 100mg



Specifications

CAS No:

498-45-3

Formula:

$C_8H_{13}NO_2$

Pathway:

GPCR/G Protein

Target:

Adrenergic Receptor

Purity / Grade:

>98%

Solubility:

10 mM in DMSO

Alternative Names:

6,7-Epoxytropine

Observed Molecular Weight:

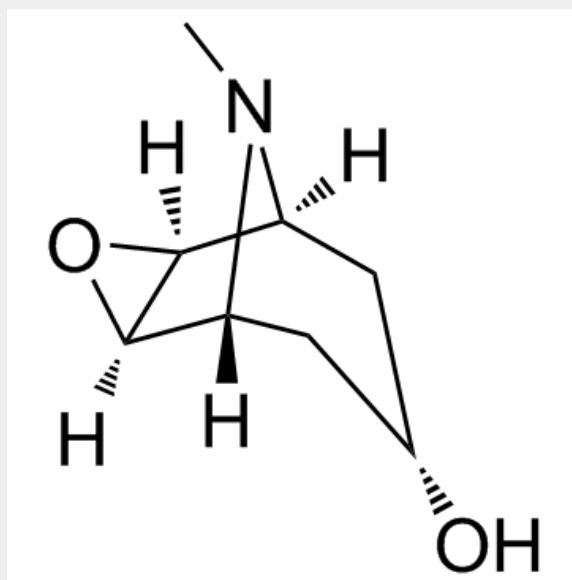
155.19

Product Description

Scopine is the metabolite of anisodine, which is a $\alpha 1$ -adrenergic receptor agonist and used in the treatment of acute circulatory shock.

Target: $\alpha 1$ -Adrenergic Receptor

Scopine is a tropane alkaloid found in a variety of plants including Mandragora root, Senecio mikanioides (Delairea odorata), Scopolia carniolica and Scopolia lurida. Scopine can be prepared by the hydrolysis of scopolamine. From Wikipedia.



All products are for RESEARCH USE ONLY. Not for diagnostic & therapeutic purposes!