

L-Epinephrine

Catalog No: tcsc2558



Available Sizes

Size: 1g

Size: 5g



Specifications

CAS No:

51-43-4

Formula:

$C_9H_{13}NO_3$

Pathway:

GPCR/G Protein;Metabolic Enzyme/Protease

Target:

Adrenergic Receptor;Endogenous Metabolite

Purity / Grade:

>98%

Solubility:

H2O : 2 mg/mL (10.92 mM; ultrasonic and adjust pH to 2 with HCl); DMSO : 2.22 mg/mL (12.12 mM; Need ultrasonic)

Alternative Names:

(-)-Epinephrine;L-Adrenaline;(-)-Adrenalin

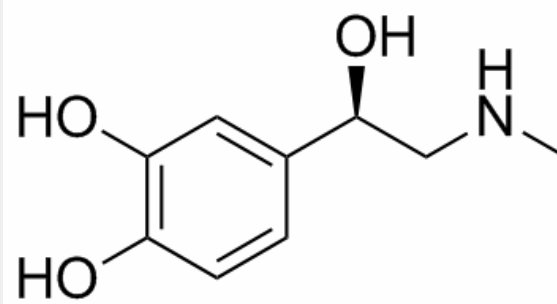
Observed Molecular Weight:

183.2

Product Description

L-Epinephrine is a hormone secreted by the medulla of the adrenal glands. L-Epinephrine is an **α-adrenergic** and **β-adrenergic** receptor agonist.

In Vivo: A 25 microliter volume of a 1-% L-epinephrine borate solution applied on the cornea of one eye in 12 monkeys reduces blood flow through the iris and the ciliary body by 59% and 20%, respectively, compared to the untreated control eyes^[1]. Epinephrine is a direct-acting sympathomimetic α -adrenergic and β -adrenergic agonist with cyclic adenosine monophosphate-mediated, complex, bidirectional pharmacologic effects on many target organs^[2]. In young adult rats, endogenous release of epinephrine facilitates stable memory formation for temporally associated events. Epinephrine enhances memory in young adult rats, in part, by increasing blood glucose levels needed to modulate memory^[3]. Epinephrine is the primary drug administered during cardiopulmonary resuscitation (CPR) to reverse cardiac arrest. Epinephrine increases arterial blood pressure and coronary perfusion during CPR via alpha-1-adrenoceptor agonist effects^[4].



All products are for RESEARCH USE ONLY. Not for diagnostic & therapeutic purposes!