

Sotalol (hydrochloride)

Catalog No: tcsc2543



Available Sizes

Size: 50mg

Size: 100mg

Size: 200mg

Size: 500mg

Size: 1g



Specifications

CAS No:

959-24-0

Formula:

$C_{12}H_{21}ClN_2O_3S$

Pathway:

GPCR/G Protein

Target:

Adrenergic Receptor

Purity / Grade:

>98%

Solubility:

DMSO : ≥ 30 mg/mL (97.14 mM)

Alternative Names:

MJ-1999

Observed Molecular Weight:

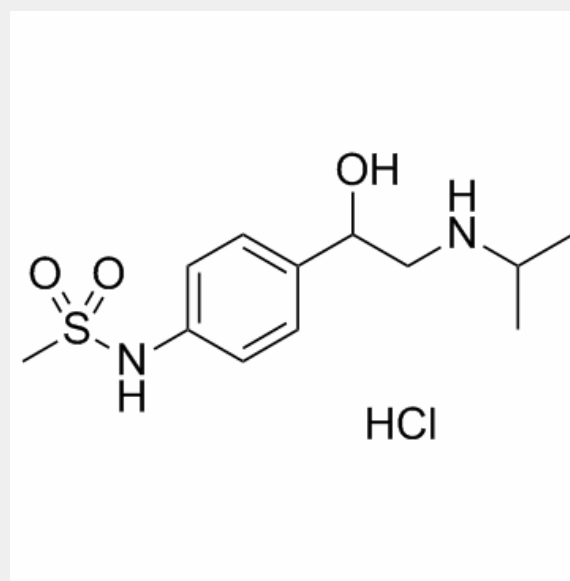
308.82

Product Description

Sotalol Hydrochloride is an adrenergic beta-antagonist that is used in the treatment of life-threatening arrhythmias.

Target: Adrenergic Receptor

Sotalol is a non-selective competitive β -adrenergic receptor blocker that also exhibits Class III antiarrhythmic properties by its inhibition of potassium channels. Sotalol is a competitive beta adrenoceptor antagonist devoid of membrane-stabilizing activity and intrinsic sympathomimetic activity that has no preferential actions on beta 1 or beta 2 responses. Sotalol causes concentration-dependent increases in the contractility of isolated ventricular tissue that is not blocked by previous beta or alpha blockade or catecholamine depletion. Sotalol consistently reduces the heart rate to a greater degree than propranolol and causes significantly less cardiac suppression than propranolol at a given heart rate [1]. Sotalol is not only a beta blocker but a class III antiarrhythmic drug. Its possible antifibrillatory activity was therefore investigated in both the ventricles and atria of dog heart in situ, since vulnerability to fibrillation is not the same in both these parts of the myocardium [2].



All products are for RESEARCH USE ONLY. Not for diagnostic & therapeutic purposes!