

Salbutamol (hemisulfate)

Catalog No: tcsc2542



Available Sizes

Size: 100mg

Size: 500mg



Specifications

CAS No:

51022-70-9

Formula:

$C_{13}H_{22}NO_5S_{0.5}$

Pathway:

GPCR/G Protein;Autophagy

Target:

Adrenergic Receptor;Autophagy

Purity / Grade:

>98%

Solubility:

H₂O : ≥ 130 mg/mL (451.17 mM)

Observed Molecular Weight:

288.14

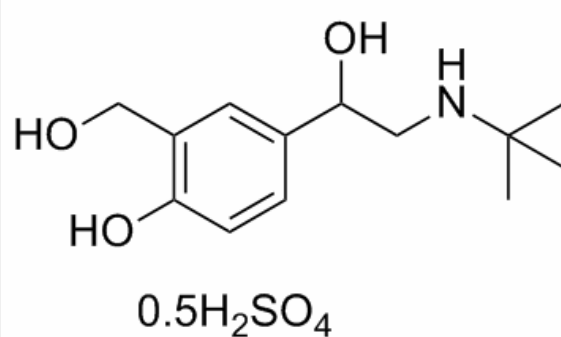
Product Description

Salbutamol Hemisulfate is a short-acting β₂ adrenergic receptor agonist

Target: β₂ Adrenergic Receptor

Salbutamol is a short-acting, selective beta₂-adrenergic receptor agonist used in the treatment of asthma and COPD. All the effects of R,S-salbutamol on guinea-pig skeletal muscles are due to the activity of the R-enantiomer. Thus there is a common enantiomeric

profile for the skeletal muscle and bronchorelaxant activity of the compound [1]. Short-term Salbutamol intake did appear to improve performance during intense submaximal exercise with concomitant increase in substrate availability and utilization, but the exact mechanisms involved need further investigation [2]. Short-term administration of salbutamol increases voluntary muscle strength in man. However, the magnitude and duration of this effect vary between muscle groups. This study implies that the beta 2-adrenoceptor agonists may be of therapeutic potential in altering skeletal muscle function in humans [3].



All products are for RESEARCH USE ONLY. Not for diagnostic & therapeutic purposes!