

# Domperidone

## Catalog No: tcsc2511



### Available Sizes

**Size:** 100mg

**Size:** 200mg

**Size:** 500mg



### Specifications

**CAS No:**

57808-66-9

**Formula:**

$C_{22}H_{24}ClN_5O_2$

**Pathway:**

GPCR/G Protein;Neuronal Signaling

**Target:**

Dopamine Receptor;Dopamine Receptor

**Purity / Grade:**

>98%

**Solubility:**

10 mM in DMSO

**Alternative Names:**

R33812

**Observed Molecular Weight:**

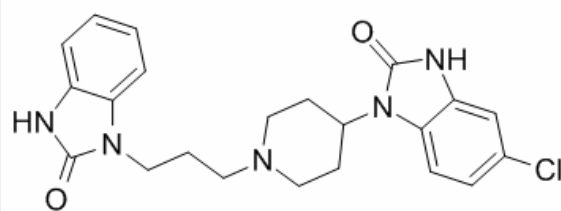
425.91

## Product Description

Domperidone is a dopamine blocker and an antidopaminergic reagent.

Target: Dopamine Receptor

Domperidone is a useful alternative to metoclopramide for treatment of gastroparesis due to better tolerability. Effectiveness and side-effects from domperidone may be influenced by patient-related factors including polymorphisms in genes encoding drug-metabolizing enzymes, drug transporters, and domperidone targets [1]. Domperidone is a dopamine D(2) receptor antagonist, which has been used as antiemetic agent in human beings. The percentage recovery of domperidone from wastewater was 95.0%. Celiprolol was used as the internal standard to access the percentage extraction of domperidone from wastewater [2]. Domperidone, a dopamine antagonist that does not easily cross the blood-brain barrier, is considered the gold standard for treating gastrointestinal symptoms in patients with Parkinson's disease (PD) because the risk of developing extrapyramidal adverse effects is considered minimal [3].



All products are for RESEARCH USE ONLY. Not for diagnostic & therapeutic purposes!