

Pramipexole

Catalog No: tcsc2510



Available Sizes

Size: 50mg

Size: 100mg



Specifications

CAS No:

104632-26-0

Formula:

$C_{10}H_{17}N_3S$

Pathway:

GPCR/G Protein;Neuronal Signaling

Target:

Dopamine Receptor;Dopamine Receptor

Purity / Grade:

>98%

Solubility:

10 mM in DMSO

Observed Molecular Weight:

211.33

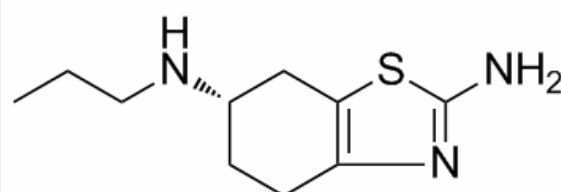
Product Description

Pramipexole is a dopamine agonist of the non-ergoline class indicated for treating Parkinson's disease (PD) and restless legs syndrome (RLS).

Target: Dopamine Receptor

Pramipexole also possesses low/insignificant affinity (500-10,000 nM) for the 5-HT1A, 5-HT1B, 5-HT1D, and α 2-adrenergic receptors.

It has negligible affinity (>10,000 nM) for the D1, D5, 5-HT2, α 1-adrenergic, β -adrenergic, H1, and mACh receptors. All sites assayed were done using human tissues. While pramipexole is used clinically, its D3-preferring receptor binding profile has made it a popular tool compound for preclinical research. Pramipexole has been used (in combination with D2- and or D3-preferring antagonists) to interrogate the role of D3 receptor function in rodent models and tasks for neuropsychiatric disorders [1-3].



All products are for RESEARCH USE ONLY. Not for diagnostic & therapeutic purposes!