

Dichlorphenamide

Catalog No: tcsc2491



Available Sizes

Size: 10mg

Size: 50mg

Size: 100mg



Specifications

CAS No:

120-97-8

Formula:

$C_6H_6Cl_2N_2O_4S_2$

Pathway:

Metabolic Enzyme/Protease

Target:

Carbonic Anhydrase

Purity / Grade:

>98%

Solubility:

DMSO : ≥ 28 mg/mL (91.76 mM)

Alternative Names:

Diclofenamide

Observed Molecular Weight:

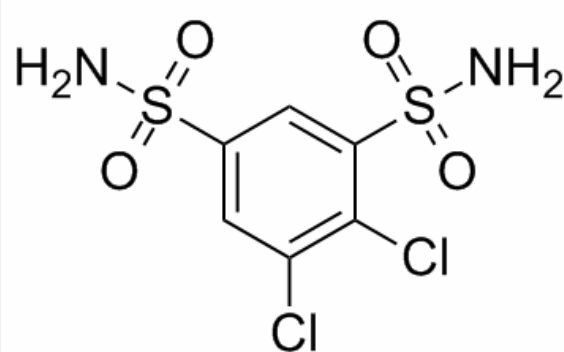
305.16

Product Description

Dichlorphenamide(Diclofenamide) is a carbonic anhydrase inhibitor that is used in the treatment of glaucoma.

Target: Carbonic Anhydrase

Dichlorphenamide is a sulfonamide and a carbonic anhydrase inhibitor of the meta-Disulfamoylbenzene class. This drug has the same side-effects as acetazolamide, for which it is a useful substitute, except for a lesser tendency to cause dermatitis, renal calculi and metabolic acidosis. It may induce a more pronounced renal loss of potassium [1]. An average daily dose of 33 mg of diclofenamide, a carbonic-anhydrase inhibitor, was added to the anti-epileptic medication already employed in 105 cases of severe epilepsy which had shown insufficient clinical improvement. A favourable action on seizures, often accompanied by an improvement in the EEG tracing, was observed in 83 cases. The effect was of long duration in 47 cases in that it lasted for more than a year. It persisted for one to twelve months in a further 17 cases, while in 19 patients, who had reacted favourably to the treatment, medication had to be suspended because of intolerance [2].



All products are for RESEARCH USE ONLY. Not for diagnostic & therapeutic purposes!