

# Mestranol

Catalog No: tcsc2476



## Available Sizes

**Size:** 100mg



## Specifications

**CAS No:**

72-33-3

**Formula:**

$C_{21}H_{26}O_2$

**Pathway:**

Others

**Target:**

Estrogen Receptor/ERR

**Purity / Grade:**

>98%

**Solubility:**

10 mM in DMSO

**Observed Molecular Weight:**

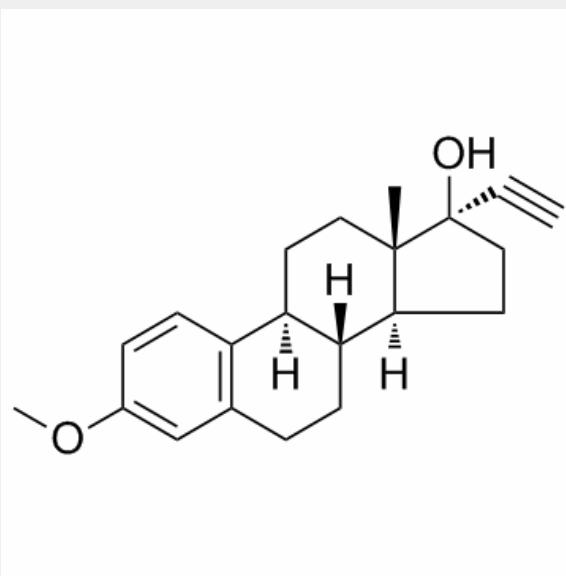
310.43

## Product Description

Mestranol is the 3-methyl ether of ethinylestradiol. It was the estrogen used in many of the first oral contraceptives.

Target: Estrogen Receptor/ERR

Mestranol is absorbed very rapidly from the digestive tract and maximum plasma levels are attained in 1-4 hours, the majority at 1-2 hours. Detectable levels of mestranol are present 24 hours postingestion in 58% of subjects after a 50 µg dose and in 79% after a 100 µg dose. At all dose levels, highest plasma mestranol levels and area under the curve of plasma levels (AUC) occurred in Sri Lankan women, and lowest plasma levels in Nigerian women, even when corrected for body surface differences [1].



All products are for RESEARCH USE ONLY. Not for diagnostic & therapeutic purposes!