

# Lisinopril

Catalog No: tcsc2443



## Available Sizes

Size: 1g

Size: 5g



## Specifications

**CAS No:**

76547-98-3

**Formula:**

$C_{21}H_{31}N_3O_5$

**Pathway:**

Metabolic Enzyme/Protease

**Target:**

Angiotensin-converting Enzyme (ACE)

**Purity / Grade:**

>98%

**Solubility:**

10 mM in DMSO

**Alternative Names:**

MK-521

**Observed Molecular Weight:**

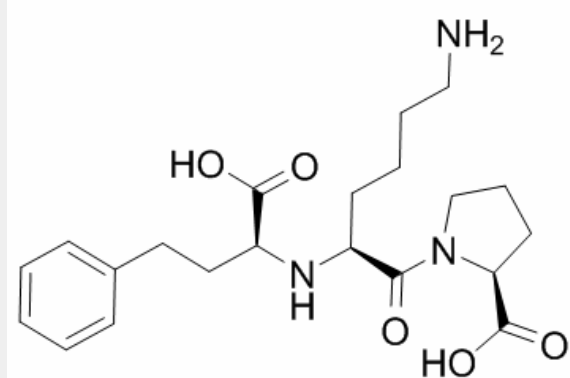
405.49

## Product Description

Lisinopril is angiotensin-converting enzyme inhibitor, used in treatment of hypertension, congestive heart failure, and heart attacks.

Target: ACE

Lisinopril is a potent, competitive inhibitor of angiotensin-converting enzyme (ACE), the enzyme responsible for the conversion of angiotensin I (ATI) to angiotensin II (ATII). ATII regulates blood pressure and is a key component of the renin-angiotensin-aldosterone system (RAAS). Lisinopril may be used to treat hypertension and symptomatic congestive heart failure, to improve survival in certain individuals following myocardial infarction, and to prevent progression of renal disease in hypertensive patients with diabetes mellitus and microalbuminuria or overt nephropathy [1, 2].



All products are for RESEARCH USE ONLY. Not for diagnostic & therapeutic purposes!