

Bromhexine (hydrochloride)

Catalog No: tcsc2430



Available Sizes

Size: 5g

Size: 10g



Specifications

CAS No:

611-75-6

Formula:

$C_{14}H_{21}Br_2ClN_2$

Pathway:

Autophagy

Target:

Autophagy

Purity / Grade:

>98%

Solubility:

DMSO : 20 mg/mL (48.47 mM; Need ultrasonic); H₂O : 3.33 mg/mL (8.07 mM; Need ultrasonic)

Observed Molecular Weight:

412.59

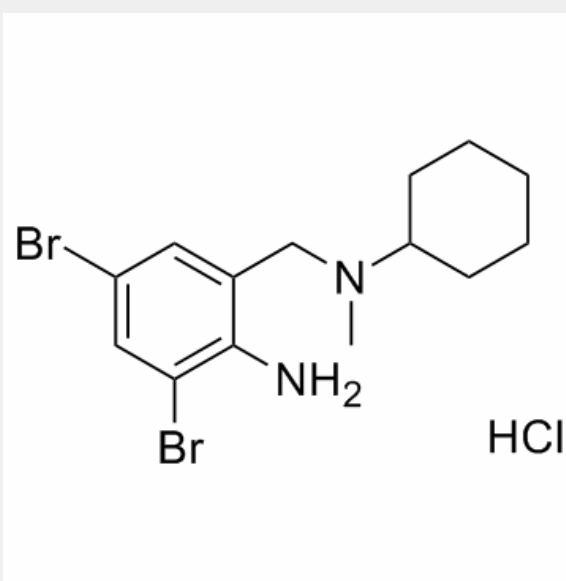
Product Description

Bromhexine Hydrochloride is a medication prescribed for coughs which works by dissolving hard phlegm.

Target: Others

Bromhexine is a mucolytic agent used in the treatment of respiratory disorders associated with viscid or excessive mucus. In addition, bromhexine has antioxidant properties. Bromhexine is intended to support the body's mechanisms for clearing mucus from

the respiratory tract. Bromhexine is a synthetic derivative of the herbal active ingredient vasicine. It has been shown to increase the proportion of serous bronchial secretion, making it more easily expectorated. It is indicated as \"secretolytic therapy in bronchopulmonary diseases associated with abnormal mucus secretion and impaired mucus transport\". From Wikipedia. [1]



All products are for RESEARCH USE ONLY. Not for diagnostic & therapeutic purposes!