

# Captopril

## Catalog No: tcsc2425



### Available Sizes

**Size:** 100mg

**Size:** 500mg



### Specifications

**CAS No:**  
62571-86-2

**Formula:**  
 $\text{C}_9\text{H}_{15}\text{NO}_3\text{S}$

**Pathway:**  
Metabolic Enzyme/Protease

**Target:**  
Angiotensin-converting Enzyme (ACE)

**Purity / Grade:**  
>98%

**Solubility:**  
DMSO :  $\geq 50$  mg/mL (230.11 mM)

**Alternative Names:**  
SQ-14534;SA333

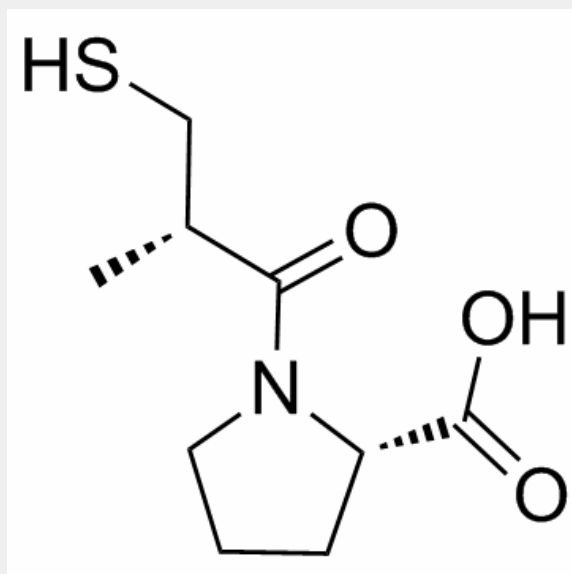
**Observed Molecular Weight:**  
217.29

### Product Description

Captopril is a potent, competitive inhibitor of angiotensin-converting enzyme (ACE).

Target: ACE

Captopril has been shown to have similar morbidity and mortality benefits to those of diuretics and beta-blockers in hypertensive patients. Captopril has been shown to delay the progression of diabetic nephropathy, and enalapril and lisinopril prevent the development of nephropathy in normoalbuminuric patients with diabetes [1]. an equimolar ratio of the cis and trans states of captopril exists in solution and that the enzyme selects only the trans state of the inhibitor that presents architectural and stereoelectronic complementarity with its substrate binding groove [2].



All products are for RESEARCH USE ONLY. Not for diagnostic & therapeutic purposes!