

Cyproheptadine (hydrochloride)

Catalog No: tcsc2423



Available Sizes

Size: 50mg

Size: 100mg

Size: 500mg

Size: 1g



Specifications

CAS No:

969-33-5

Formula:

$C_{21}H_{22}ClN$

Pathway:

Neuronal Signaling;GPCR/G Protein

Target:

5-HT Receptor;5-HT Receptor

Purity / Grade:

>98%

Solubility:

10 mM in DMSO

Observed Molecular Weight:

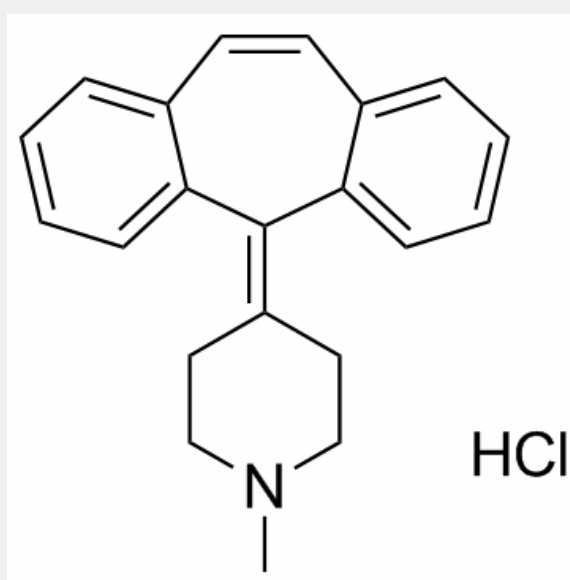
323.86

Product Description

Cyproheptadine is a histamine receptor antagonist for 5-HT₂ receptor with IC₅₀ of 0.6 nM.

Target: 5-HT₂ Receptor

Cyproheptadine is a serotonin antagonist and a histamine H₂ blocker used as antipruritic, appetite stimulant, antiallergic, and for the post-gastrectomy dumping syndrome, etc. Inhibitory effects of cyclobenzaprine, amitriptyline, and cyproheptadine on mono- and polysynaptic reflex potentials are due to the inhibition of descending serotonergic systems through 5-HT(2) receptors in the spinal cord [1, 2].



All products are for RESEARCH USE ONLY. Not for diagnostic & therapeutic purposes!