

Aspartame

Catalog No: tcsc2418



Available Sizes

Size: 1g

Size: 5g



Specifications

CAS No:

22839-47-0

Formula:

$C_{14}H_{18}N_2O_5$

Pathway:

Others

Target:

Others

Purity / Grade:

>98%

Solubility:

DMSO : ≥ 60 mg/mL (203.87 mM)

Alternative Names:

SC-18862

Observed Molecular Weight:

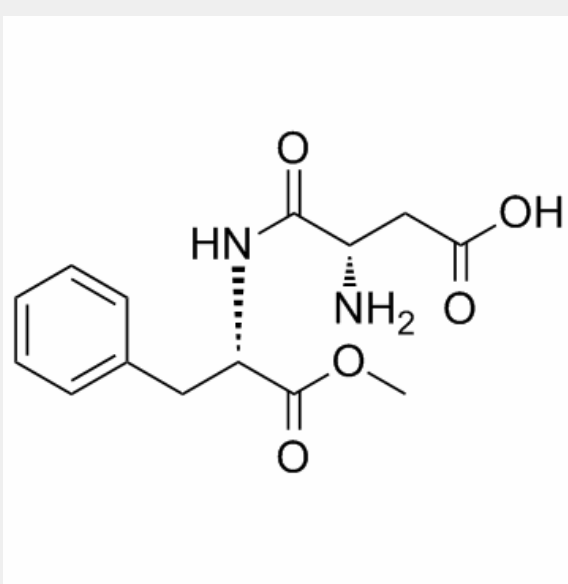
294.3

Product Description

Aspartame is an artificial, non-saccharide sweetener used as a sugar substitute in some foods and beverages.

Target: Others

Aspartame is a flavoring agent sweeter than sugar. Aspartame is a methyl ester of a dipeptide used as a synthetic nonnutritive sweetener. Epidemiological studies on aspartame include several case-control studies and one well-conducted prospective epidemiological study with a large cohort, in which the consumption of aspartame was measured. The studies provide no evidence to support an association between aspartame and cancer in any tissue. The weight of existing evidence is that aspartame is safe at current levels of consumption as a nonnutritive sweetener [1]. aspartame is safe, and there are no unresolved questions regarding its safety under conditions of intended use [2]. excessive aspartame ingestion might be involved in the pathogenesis of certain mental disorders (DSM-IV-TR 2000) and also in compromised learning and emotional functioning [3].



All products are for RESEARCH USE ONLY. Not for diagnostic & therapeutic purposes!