

Meglumine

Catalog No: tcsc2384



Available Sizes

Size: 50g



Specifications

CAS No:

6284-40-8

Formula:

$C_7H_{17}NO_5$

Pathway:

Others

Target:

Others

Purity / Grade:

>98%

Solubility:

H₂O : 50 mg/mL (256.13 mM; Need ultrasonic); DMSO : ≥ 50 mg/mL (256.13 mM)

Alternative Names:

Meglumin;Methylglucamin;Methylglucamine

Observed Molecular Weight:

195.21

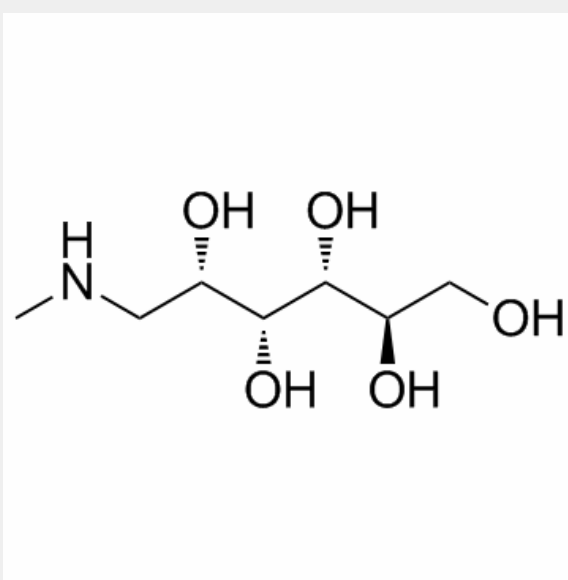
Product Description

Meglumine is an amino sugar derived from sorbitol.

Target: Others

Meglumine is often used as an excipient in pharmaceuticals and in conjunction with iodinated compounds in contrast media such as

diatrizoate meglumine and iodipamide meglumine.[1]



All products are for RESEARCH USE ONLY. Not for diagnostic & therapeutic purposes!