

# Sulbactam

Catalog No: tcsc2376



## Available Sizes

**Size:** 100mg



## Specifications

**CAS No:**

68373-14-8

**Formula:**

$C_8H_{11}NO_5S$

**Pathway:**

Anti-infection

**Target:**

Bacterial

**Purity / Grade:**

>98%

**Solubility:**

H<sub>2</sub>O : 76.7 mg/mL (328.85 mM; Need ultrasonic); DMSO : ≥ 70 mg/mL (300.12 mM)

**Alternative Names:**

CP45899

**Observed Molecular Weight:**

233.24

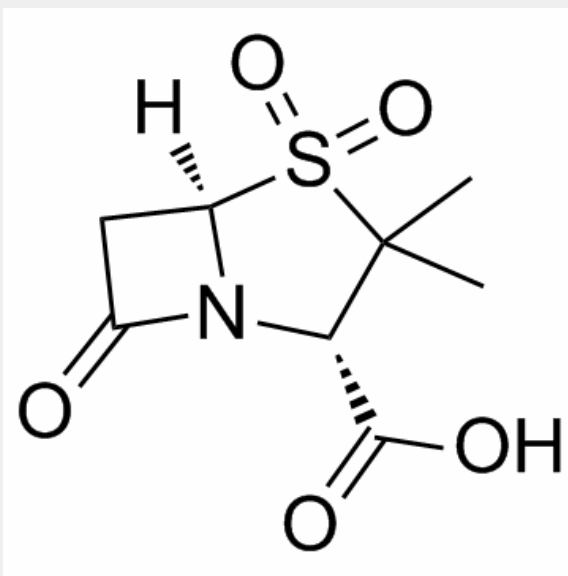
## Product Description

Sulbactam(Betamaze) is an irreversible β-lactamase inhibitor.

Target: β-lactamase; Antibacterial

Sulbactam is a mechanism-based inhibitor of beta-lactamase enzymes used in clinical practice. sulbactam was the antimicrobial

agent responsible for the killing of these organisms [1]. sulbactam may prove effective for non-life-threatening *A. baumannii* infections. Its role in the treatment of severe infections is unknown. However, the current formulation of sulbactam alone may allow its use at higher doses and provide new potential synergic combinations, particularly for those infections by *A. baumannii* resistant to imipenem [2].



All products are for RESEARCH USE ONLY. Not for diagnostic & therapeutic purposes!