

# CW-069

Catalog No: tcsc2329



## Available Sizes

Size: 5mg

Size: 10mg



## Specifications

### CAS No:

1594094-64-0

### Formula:

$C_{23}H_{21}IN_2O_3$

### Pathway:

Cytoskeleton;Cell Cycle/DNA Damage

### Target:

Kinesin;Kinesin

### Purity / Grade:

>98%

### Solubility:

DMSO :  $\geq 52$  mg/mL (103.93 mM)

### Observed Molecular Weight:

500.33

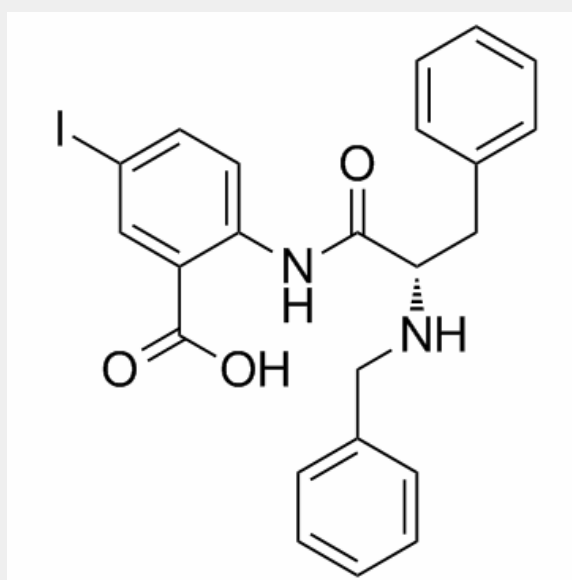
## Product Description

CW-069 is an allosteric inhibitor of **HSET** with an **IC<sub>50</sub>** of 75  $\mu$ M.

IC50 & Target: IC50: 75  $\mu$ M (HSET)<sup>[1]</sup>

**In Vitro:** CW-069 is an allosteric inhibitor of HSET with an IC<sub>50</sub> of 75  $\mu$ M. CW-069 shows statistically significant selectivity over KSP. CW-069 potently suppresses N1E-115 cells, and less potently inhibits the NHDF cells, with IC<sub>50</sub> of  $86 \pm 10$   $\mu$ M and  $181 \pm 7$   $\mu$ M,

respectively. CW-069 (100 or 200  $\mu$ M) causes increased multipolar spindles in N1E-115 cells with supernumerary centrosomes and shows no effect on altering bipolar spindle morphology in normal human dermal fibroblast cells. CW-069 (200  $\mu$ M) causes multipolar anaphase and cell death induced in N1E-115 cells via transfection with HSET siRNA, and antagonizes inhibition of KSP by monastrol, but does not exert mitotic arrest in HeLa cells<sup>[1]</sup>.



All products are for RESEARCH USE ONLY. Not for diagnostic & therapeutic purposes!