

# Chlorthalidone

Catalog No: tcsc2290



## Available Sizes

**Size:** 10mg

**Size:** 50mg



## Specifications

**CAS No:**

77-36-1

**Formula:**

$C_{14}H_{11}ClN_2O_4S$

**Pathway:**

Others

**Target:**

Others

**Purity / Grade:**

>98%

**Solubility:**

DMSO :  $\geq 41$  mg/mL (121.03 mM)

**Observed Molecular Weight:**

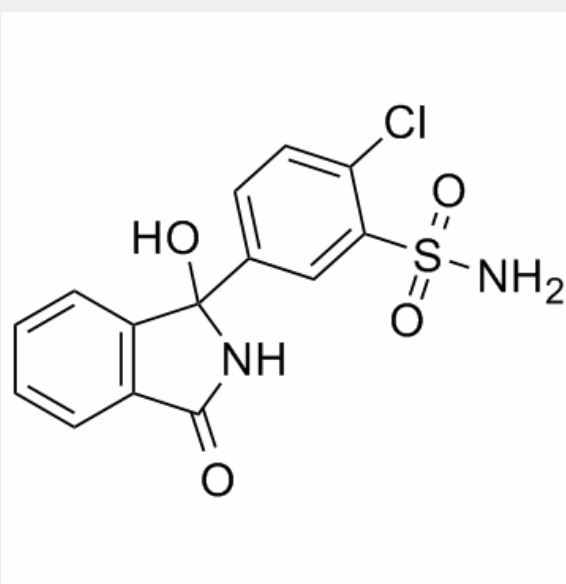
338.77

## Product Description

Chlorthalidone is a thiazide-like diuretic used to treat hypertension.

**In Vivo:** Chlorthalidone is a thiazide-like diuretic. After oral intake, peak serum concentrations are achieved in 2-6 hours. The half-life of Chlorthalidone is approximately 42 (range 29-55) hours, reaching 45-60 hours after long-term dosing. However, interindividual variability in the half-life of Chlorthalidone is wide. Chlorthalidone is excreted unchanged by the kidneys. The natriuretic effect of Chlorthalidone is maximal at 18 hours and lasts more than 48 hours. Comparing different doses of Chlorthalidone, it has been

observed that 25 mg daily is nearly as effective as higher doses, but with less risk of hypokalemia<sup>[1]</sup>. Chlorthalidone reduces calcium oxalate calculous recurrence but magnesium hydroxide does not. The effectiveness of Chlorthalidone or magnesium hydroxide is examined in the prevention of recurrent calcium oxalate kidney calculi. In a double-blind random allocation design daily dosages of 25 or 50 mg. Chlorthalidone, 650 or 1,300 mg. magnesium hydroxide, or an identical placebo are administered. All groups showed significantly decreased calculous events compared to the pretreatment rates. During the trial 56.1 per cent fewer calculi than predicted developed in the placebo group (p less than 0.01), whereas the groups receiving low and high dosage magnesium hydroxide showed 73.9 and 62.3 per cent fewer calculi, respectively (p less than 0.001 and less than 0.01, respectively). Chlorthalidone treatment results in a 90.1 per cent decrease from predicted rates and both dosages yielded similar results. When the treatments are compared Chlorthalidone is significantly better than the placebo or magnesium hydroxide (p less than 0.01). The large decreases in calculous events seen when placebo or ineffective therapy is given underscore the positive treatment bias that occurs when historical controls are used and they demonstrate the need for proper experimental design<sup>[2]</sup>.



All products are for RESEARCH USE ONLY. Not for diagnostic & therapeutic purposes!