

# PLpro inhibitor

## Catalog No: tcsc2273



### Available Sizes

**Size:** 5mg

**Size:** 10mg

**Size:** 50mg

**Size:** 100mg



### Specifications

**CAS No:**

1093070-14-4

**Formula:**

$C_{22}H_{22}N_2O_2$

**Pathway:**

Anti-infection

**Target:**

SARS-CoV

**Purity / Grade:**

>98%

**Solubility:**

DMSO :  $\geq 42$  mg/mL (121.24 mM)

**Observed Molecular Weight:**

346.42

### Product Description

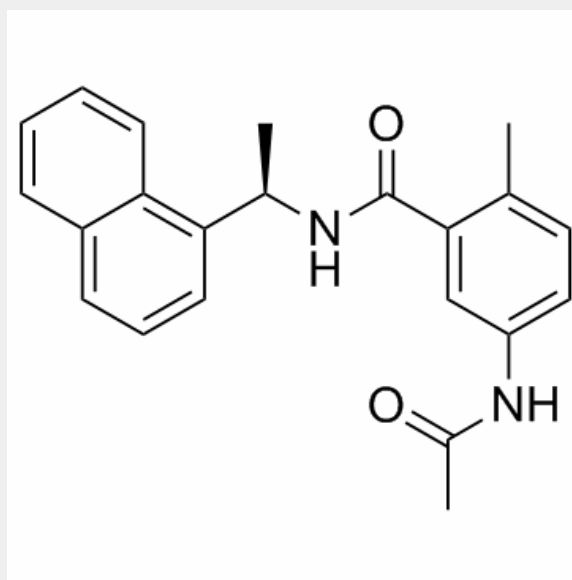
PLpro inhibitor is a potent inhibitor of papain-like protease (PLpro) with IC50 of 2.6  $\mu$ M.

IC50 Value: 2.6  $\mu$ M [1]

Target: PLpro; SARS-CoV

in vitro: PLpro inhibitor is a potent inhibitor against the papain-like protease (PLpro) from the coronavirus that causes severe acute respiratory syndrome (SARS-CoV). PLpro inhibitor was found to have IC50 value of  $2.6 \pm 0.1 \mu\text{M}$ . PLpro inhibitor display significant antiviral activity with EC50 values of  $13.1 \pm 0.7 \mu\text{M}$ , without toxicity up to the highest concentration tested. Notably, the increasing antiviral potency correlates with the in vitro inhibition of PLpro, suggesting that the compounds work directly on the enzyme in cells [1,2].

in vivo:



All products are for RESEARCH USE ONLY. Not for diagnostic & therapeutic purposes!