

Nimodipine

Catalog No: tcsc2253



Available Sizes

Size: 100mg

Size: 500mg



Specifications

CAS No:

66085-59-4

Formula:

$C_{21}H_{26}N_2O_7$

Pathway:

Membrane Transporter/Ion Channel;Autophagy

Target:

Calcium Channel;Autophagy

Purity / Grade:

>98%

Solubility:

DMSO : ≥ 300 mg/mL (716.95 mM)

Alternative Names:

BAY-e 9736

Observed Molecular Weight:

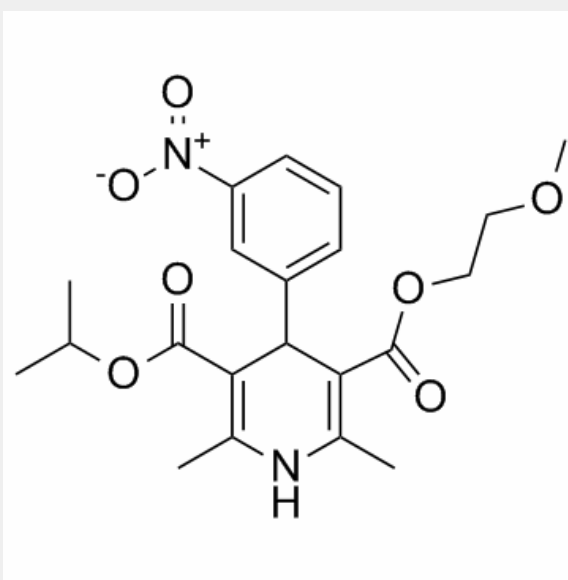
418.44

Product Description

Nimodipine(Nimotop) is a dihydropyridine derivative and an analogue of the calcium channel blocker nifedipine, with antihypertensive activity.Nimodipine decreases intracellular free Ca^{2+} ,Beclin-1 and autophagy.

Target: Calcium Channel

Nimodipine is main use is in the prevention of cerebral vasospasm and resultant ischemia, a complication of subarachnoid hemorrhage (a form of cerebral bleed), specifically from ruptured intracranial berry aneurysms irrespective of the patient's post-ictus neurological condition. Its administration begins within 4 days of a subarachnoid hemorrhage and is continued for three weeks. If blood pressure drops by over 5%, dosage is adjusted. There is still controversy regarding the use of intravenous nimodipine on a routine basis [1, 2].



All products are for RESEARCH USE ONLY. Not for diagnostic & therapeutic purposes!