

# Eplerenone

Catalog No: tcsc2231



## Available Sizes

**Size:** 10mg

**Size:** 50mg

**Size:** 100mg



## Specifications

**CAS No:**

107724-20-9

**Formula:**

$C_{24}H_{30}O_6$

**Pathway:**

Metabolic Enzyme/Protease

**Target:**

Mineralocorticoid Receptor

**Purity / Grade:**

>98%

**Solubility:**

DMSO : 9.33 mg/mL (22.51 mM; Need ultrasonic and warming)

**Alternative Names:**

Epoxymexrenone

**Observed Molecular Weight:**

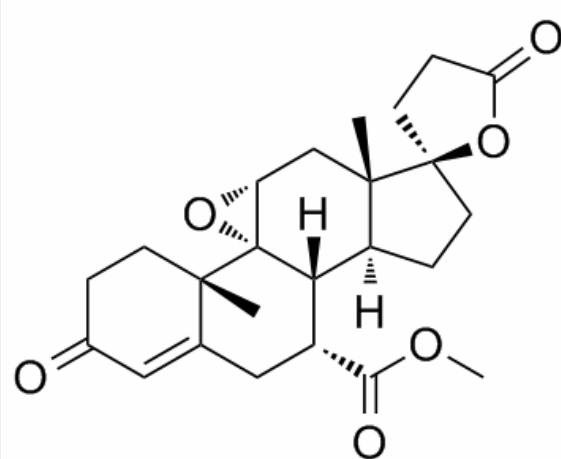
414.49

## Product Description

Eplerenone is an aldosterone antagonist with an IC<sub>50</sub> of 0.36  $\mu$ M.

Target: Mineralocorticoid Receptor

Eplerenone is a selective mineralocorticoid receptor antagonist, which has been shown to produce sustained increases in plasma renin and serum aldosterone, consistent with inhibition of the negative regulatory feedback of aldosterone on renin secretion. The resulting increased plasma renin activity and aldosterone circulating levels do not overcome the effects of eplerenone. Eplerenone selectively binds to recombinant human mineralocorticoid receptors relative to its binding to recombinant human glucocorticoid, progesterone and androgen receptors [1]. Benefits of eplerenone therapy over placebo were also observed in several secondary outcomes, including: death from any cause or hospitalization for HF; death from any cause; hospitalization for any reason; or hospitalization for HF [2].



All products are for RESEARCH USE ONLY. Not for diagnostic & therapeutic purposes!