

Zolmitriptan

Catalog No: tcsc2179



Available Sizes

Size: 100mg

Size: 500mg



Specifications

CAS No:

139264-17-8

Formula:

$C_{16}H_{21}N_3O_2$

Pathway:

Neuronal Signaling;GPCR/G Protein

Target:

5-HT Receptor;5-HT Receptor

Purity / Grade:

>98%

Solubility:

10 mM in DMSO

Alternative Names:

BW-311C90;311C90

Observed Molecular Weight:

287.36

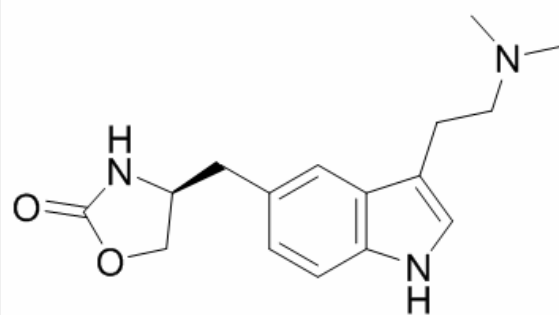
Product Description

Zolmitriptan, a selective serotonin receptor agonist, is used to treat migraine attacks with or without aura and cluster headaches.

Target: serotonin receptor agonist

Zolmitriptan is a selective serotonin receptor agonist of the 1B and 1D subtypes. It is a triptan, used in the acute treatment of migraine attacks with or without aura and cluster headaches. Zolmitriptan is available as a swallowable tablet, an oral disintegrating tablet, and a nasal spray, in doses of 2.5 and 5 mg. People who get migraines from aspartame should not use the disintegrating tablet (Zomig ZMT), which contains aspartame. According to a study of healthy volunteers, food intake seems to have no significant effect on the effectiveness of Zolmitriptan in both men and women.

Zolmitriptan should not be given to patients with ischemic heart disease (angina pectoris, history of myocardial infarction, or documented silent ischemia) or to patients who have symptoms or findings consistent with ischemic heart disease, coronary artery vasospasm, including Prinzmetal's angina, or other significant underlying cardiovascular disease. Zolmitriptan may increase blood pressure, it should not be given to patients with uncontrolled hypertension, should not be used within 24 hours of treatment with another 5-HT₁ agonist, or an ergotamine-containing or ergot-type medication like dihydroergotamine or methysergide, and should not be administered to patients with hemiplegic or basilar migraine.



All products are for RESEARCH USE ONLY. Not for diagnostic & therapeutic purposes!