

Mosapride (citrate)

Catalog No: tcsc2081



Available Sizes

Size: 10mg

Size: 50mg



Specifications

CAS No:

112885-42-4

Formula:

$C_{27}H_{33}ClFN_3O_{10}$

Pathway:

Neuronal Signaling;GPCR/G Protein

Target:

5-HT Receptor;5-HT Receptor

Purity / Grade:

>98%

Solubility:

10 mM in DMSO

Alternative Names:

TAK-370 citrate;AS-4370 citrate

Observed Molecular Weight:

614.02

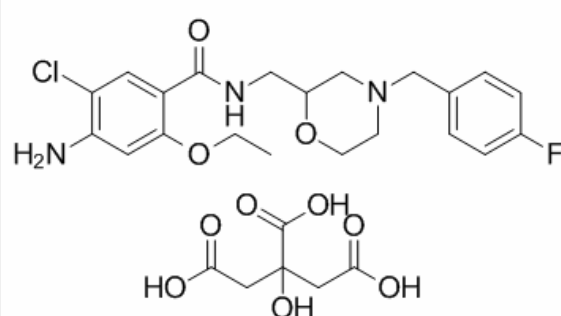
Product Description

Mosapride citrate is a gastroprokinetic agent that acts as a selective 5HT4 agonist.

Target: 5HT4

Mosapride is a gastroprokinetic agent that acts as a selective 5HT4 agonist. The major active metabolite of mosapride, known as M1, additionally acts as a 5HT3 antagonist, which accelerates gastric emptying throughout the whole of the gastrointestinal tract in humans, and is used for the treatment of gastritis, gastro-oesophageal reflux disease, functional dyspepsia and irritable bowel syndrome. It is recommended to be taken on an empty stomach (i.e. at least one hour before food or two hours after food).

In addition to its prokinetic properties, mosapride also exerts anti-inflammatory effects on the gastrointestinal tract which may contribute to some of its therapeutic effects. Mosapride also promotes neurogenesis in the gastrointestinal tract which may prove useful in certain bowel disorders. The neurogenesis is due to mosapride's effect on the 5-HT4 receptor where it acts as an agonist. Its common side effects include dry mouth, abdominal pain, dizziness, headache, insomnia, malaise, nausea, diarrhoea and sometimes constipation. Unlike some other prokinetic agents, mosapride has little effect on potassium channels, no effect on hERG transfected cells, and no effect on cardiovascular function that could be detected in tests on humans. Due to the pharmacokinetics of mosapride, it would take 1,000 - 3,000 times the therapeutic dose to elicit cardiovascular effects.



All products are for RESEARCH USE ONLY. Not for diagnostic & therapeutic purposes!