

Tolrestat

Catalog No: tcsc2040



Available Sizes

Size: 5mg

Size: 10mg

Size: 50mg

Size: 100mg



Specifications

CAS No:

82964-04-3

Formula:

$C_{16}H_{14}F_3NO_3S$

Pathway:

Metabolic Enzyme/Protease

Target:

Aldose Reductase

Purity / Grade:

>98%

Solubility:

10 mM in DMSO

Alternative Names:

AY-27773

Observed Molecular Weight:

357.35

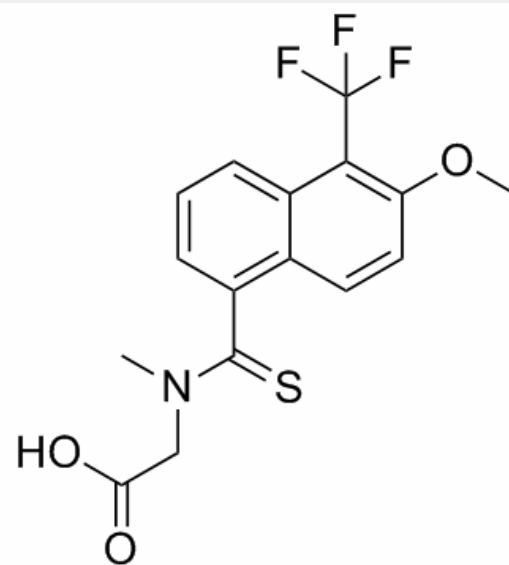
Product Description

Tolrestat is a potent, orally active **aldose reductase** inhibitor with **IC₅₀** of 35 nM.

IC50 & Target: IC50: 35 nM (Aldose Reductase)

In Vivo: Tolrestat (1.8 mg/kg per day) causes a reversal to normal RBC sorbitol levels diabetic rats^[1]. In 21-day diabetic rats, the estimated ID in the sciatic nerve and lenses is 4.8 and about 20 for tolrestat, and 1.7 and 2.2 for (±)sorbitol,

respectively^[2]. Either tolrestat or sorbinil inhibits tissue AR activity but does not significantly affect plasma lipoprotein levels, or affect the body weight of the mice or their general health. Accumulation of cholesterol-rich foam cells is significantly increased in aortic roots of tolrestat-fed mice^[3].



All products are for RESEARCH USE ONLY. Not for diagnostic & therapeutic purposes!