

# Duloxetine (hydrochloride)

Catalog No: tcsc1993



## Available Sizes

**Size:** 10mg

**Size:** 50mg

**Size:** 100mg



## Specifications

**CAS No:**

136434-34-9

**Formula:**

$C_{18}H_{20}ClNO_2S$

**Pathway:**

Neuronal Signaling

**Target:**

Serotonin Transporter

**Purity / Grade:**

>98%

**Solubility:**

10 mM in DMSO

**Alternative Names:**

(S)-Duloxetine hydrochloride;LY-248686 hydrochloride

**Observed Molecular Weight:**

333.88

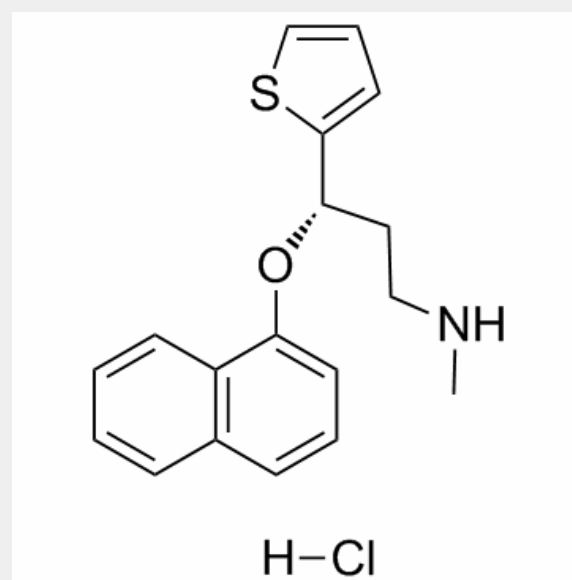
## Product Description

Duloxetine hydrochloride is a serotonin-norepinephrine reuptake inhibitor (SNRI) with  $K_i$  of 4.6 nM, used for treatment of major depressive disorder and generalized anxiety disorder (GAD).

Target: SNRI

Duloxetine (sold under the brand names Cymbalta, Aricclaim, Xeristar, Yentreve, Duzela, Dulane) is a serotonin-norepinephrine reuptake inhibitor (SNRI) manufactured and marketed by Eli Lilly. It is prescribed for major depressive disorder and generalized anxiety disorder (GAD). Duloxetine also has approval for use in osteoarthritis and musculoskeletal pain. Duloxetine failed the US approval for stress urinary incontinence amidst concerns over liver toxicity and suicidal events; however, it was approved for this indication in Europe, where it is recommended as an add-on medication in stress urinary incontinence instead of surgery. It can also relieve the symptoms of painful peripheral neuropathy, particularly diabetic neuropathy, and it is used to control the symptoms of fibromyalgia.

The main uses of duloxetine are in major depressive disorder, general anxiety disorder, stress urinary incontinence, painful peripheral neuropathy, fibromyalgia, and chronic musculoskeletal pain associated with osteoarthritis and chronic lower back pain. It is being studied for various other indications.



All products are for RESEARCH USE ONLY. Not for diagnostic & therapeutic purposes!