

Prostaglandin E1

Catalog No: tcsc1905



Available Sizes

Size: 5mg

Size: 10mg

Size: 50mg



Specifications

CAS No:

745-65-3

Formula:

$C_{20}H_{34}O_5$

Pathway:

GPCR/G Protein;Metabolic Enzyme/Protease

Target:

Prostaglandin Receptor;Endogenous Metabolite

Purity / Grade:

>98%

Solubility:

Ethanol : ≥ 100 mg/mL (282.10 mM)

Alternative Names:

PGE1

Observed Molecular Weight:

354.48

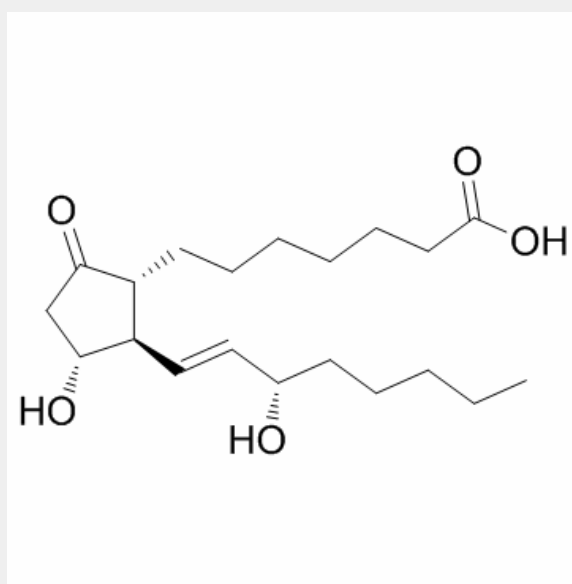
Product Description

Prostaglandin E1 (Alprostadi) is a prostaglandin, which is used in the treatment of erectile dysfunction and has vasodilatory properties.

Target: Prostaglandin Receptor

Prostaglandin E1 (PGE1), known pharmaceutically as alprostadi, is a prostaglandin. It is a drug used in the treatment of erectile dysfunction and has vasodilatory properties. In healthy humans, prostaglandin E1 is biosynthesized \"on demand\" at its intended site of action from dihomo- γ -linolenic acid.

Alprostadi is a naturally occurring prostaglandin used in the treatment of infants with congenital heart defects to maintain the patency of the ductus arteriosus until palliative or corrective surgery can be performed. In infants with defects restricting pulmonary blood flow (cyanotic), alprostadi improves arterial blood oxygenation. In infants with defects restricting systemic blood flow, alprostadi improves arterial blood pH, urine output, and femoral arterial pulses. Alprostadi is administered by continuous intraarterial or intravenous infusion, usually at a starting dose of 0.1 microgram/kg/min, with maintenance doses as low as 0.002 microgram/kg/min.



All products are for RESEARCH USE ONLY. Not for diagnostic & therapeutic purposes!