

# Omeprazole

Catalog No: tcsc1868



## Available Sizes

**Size:** 100mg

**Size:** 500mg



## Specifications

**CAS No:**

73590-58-6

**Formula:**

$C_{17}H_{19}N_3O_3S$

**Pathway:**

Membrane Transporter/Ion Channel;Autophagy

**Target:**

Proton Pump;Autophagy

**Purity / Grade:**

>98%

**Solubility:**

10 mM in DMSO

**Alternative Names:**

H 16868

**Observed Molecular Weight:**

345.42

## Product Description

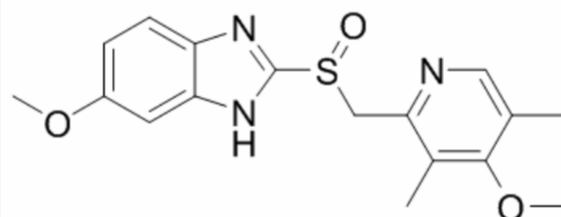
Omeprazole(Prilosec) is a proton pump inhibitor used in the treatment of dyspepsia.

**Target: Proton Pump**

Omeprazole is a proton pump inhibitor used in the treatment of dyspepsia, peptic ulcer disease, gastroesophageal reflux disease, laryngopharyngeal reflux, and Zollinger-Ellison syndrome. Omeprazole virtually eliminated intragastric acidity in all patients: the median 24 hour intragastric pH rose from 1.4 to 5.3 and the mean hourly hydrogen ion activity fell from 38.50 to 1.95 mmol(mEq)/1 (p less than 0.001). This inhibition of 24 hour intragastric acidity is more profound than that previously reported with either cimetidine 1 g daily or ranitidine 300 mg daily [1]. The pharmacokinetics of omeprazole were studied in a group of healthy male subjects after single and repeated oral doses of 30 and 60 mg. Absorption of omeprazole from its enteric-coated formulation was unpredictable. There was a highly significant increase in the area under the plasma concentration time curve (AUC) after repeated dosing. Omeprazole increases its own relative availability following repeated dosing. This may be due to inhibition of gastric acid secretion by omeprazole which is an acid-labile compound [2].

Clinical indications: Duodenal ulcer; Endocrine tumor; Esophagitis; Gastroesophageal reflux; Helicobacter pylori infection; Stomach ulcer; Zollinger-Ellison syndrome

Toxicity: Symptoms of overdose include confusion, drowsiness, blurred vision, tachycardia, nausea, diaphoresis, flushing, headache, and dry mouth.



All products are for RESEARCH USE ONLY. Not for diagnostic & therapeutic purposes!