

# Lansoprazole

Catalog No: tcsc1847



## Available Sizes

Size: 1g

Size: 5g



## Specifications

**CAS No:**

103577-45-3

**Formula:**

$C_{16}H_{14}F_3N_3O_2S$

**Pathway:**

Membrane Transporter/Ion Channel

**Target:**

Proton Pump

**Purity / Grade:**

>98%

**Solubility:**

DMSO : 100 mg/mL (270.74 mM; Need ultrasonic); H<sub>2</sub>O :

**Alternative Names:**

AG-1749

**Observed Molecular Weight:**

369.36

## Product Description

Lansoprazole(AG 1749) is a proton pump inhibitor which prevents the stomach from producing acid.

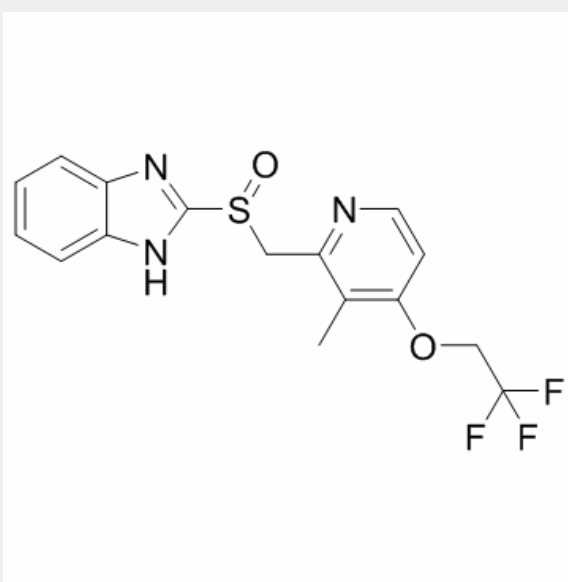
Target: Proton Pump

Lansoprazole, a substituted benzimidazole proton pump inhibitor, on pharmacokinetics and metabolism of theophylline has been studied in healthy adults given oral lansoprazole 30 mg once daily for 11 days. On Days 4 and 11 of 300 mg aminophylline was simultaneously administered orally and blood samples for theophylline analysis were taken over 24 h [1]. Patients in the lansoprazole group were significantly less likely to have a recurrence of ulcer complications than patients in the placebo group (P=0.008). There was no significant difference in mortality between the two groups [2]. lansoprazole (AG-1749) and omeprazole, were found to have significant activities against this organism. The activity of lansoprazole was comparable to that of bismuth citrate, with MICs ranging from 3.13 to 12.5 micrograms/ml, and fourfold more potent than that of omeprazole [3].

Clinical indications: Duodenal ulcer; Esophagitis; Gastroesophageal reflux; Gastrointestinal disease; Helicobacter pylori infection; Peptic ulcer; Stomach ulcer; Ulcer; Zollinger-Ellison syndrome

FDA Approved Date: May 10, 1995

Toxicity: Symptoms of overdose include abdominal pain, nausea and diarrhea.



All products are for RESEARCH USE ONLY. Not for diagnostic & therapeutic purposes!