

# Fluvoxamine (maleate)

Catalog No: tcsc1839



## Available Sizes

**Size:** 10mg

**Size:** 50mg

**Size:** 100mg



## Specifications

**CAS No:**

61718-82-9

**Formula:**

$C_{19}H_{25}F_3N_2O_6$

**Pathway:**

Neuronal Signaling

**Target:**

Serotonin Transporter

**Purity / Grade:**

>98%

**Solubility:**

10 mM in DMSO

**Alternative Names:**

DU-23000 (maleate)

**Observed Molecular Weight:**

434.41

## Product Description

Fluvoxamine maleate is an antidepressant which functions pharmacologically as a selective serotonin reuptake inhibitor.

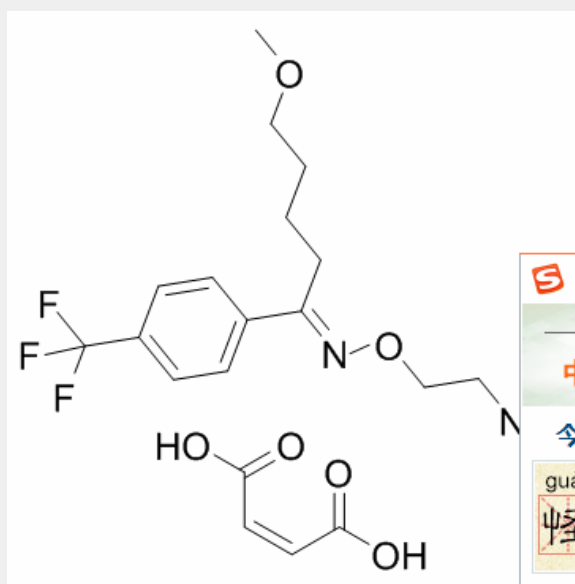
Target: SSRIs

Fluvoxamine (maleate) is the maleate salt form of fluvoxamine, which is effective in inhibiting 5-HT uptake by blood platelets and brain synaptosomes. The antagonism by fluvoxamine of the reserpine-induced lowering of the pentamethylenetetrazole convulsive threshold can be regarded as due to an effect upon 5-HT uptake. In contrast to the effects of desmethylinipramine and imipramine, no stimulatory effects are found in rats when rapidly acting reserpine-like compounds are given following a dose of fluvoxamine [1]. fluvoxamine appears to improve combat-related PTSD symptoms but not depressive symptoms. The high attrition rate and lack of a placebo group limits the conclusions of our study. Controlled studies of fluvoxamine in the treatment of PTSD are warranted [2]. Fluvoxamine was less potent at decreasing ethanol self-administration when food was available concurrently versus when ethanol was available in isolation [ED50: 4.0 (2.7-5.9) and 5.1 (4.3-6.0)]. Effects on food were similar under each condition in which food was available. The results demonstrate that the potency of fluvoxamine in reducing ethanol-maintained behavior depends on whether ethanol is available in isolation or in the context of concurrently scheduled food reinforcement [3].

Clinical indications: Depression; Obsessive compulsive disorder; Social phobia

\ " FDA Approved Date: December 5, 1994

Toxicity: Anorexia, Constipation, Dry mouth, Headache, Nausea, Nervousness, Skin rash, Sleep problems, Somnolence, Liver toxicity, Mania, Increase urination, Seizures, Sweating increase, Tremors, or Tourette\'s syndrome.



All products are for RESEARCH USE ONLY. Not for diagnostic & therapeutic purposes!