

# Levalbuterol (tartrate)

Catalog No: tcsc1682



## Available Sizes

**Size:** 10mg

**Size:** 50mg



## Specifications

**CAS No:**

661464-94-4

**Formula:**

$C_{30}H_{48}N_2O_{12}$

**Pathway:**

GPCR/G Protein

**Target:**

Adrenergic Receptor

**Purity / Grade:**

>98%

**Solubility:**

10 mM in DMSO

**Alternative Names:**

Levosalbutamol tartrate

**Observed Molecular Weight:**

628.71

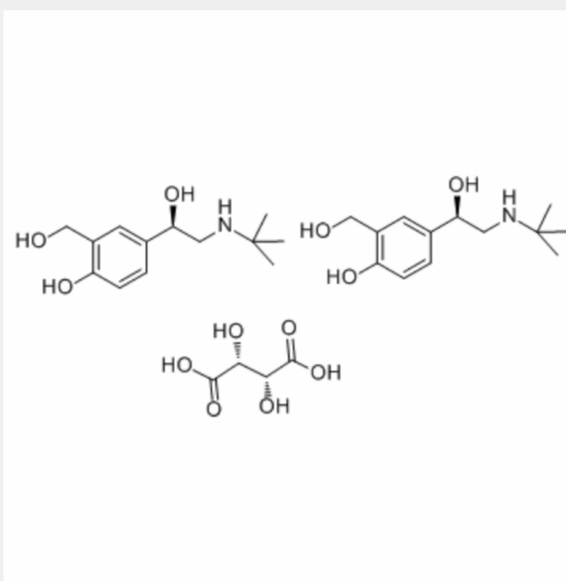
## Product Description

Levosalbutamol tartrate(levulbuterol) is the R-enantiomer of the short-acting  $\beta$ 2-adrenergic receptor agonist salbutamol.

IC50 Value:

Target:  $\beta$ 2-adrenergic receptor

Levosalbutamol and salbutamol produced significantly better bronchodilator responses than placebo. Both the drugs showed equivalent time-dependent bronchodilator responses as measured by area under curve for percent change in FEV(1) and FVC over 6h. The time to onset of action, mean maximum bronchodilator response and duration of bronchodilator response were similar between levosalbutamol and salbutamol [1].



All products are for RESEARCH USE ONLY. Not for diagnostic & therapeutic purposes!