

L-Stepholidine

Catalog No: tcsc1253



Available Sizes

Size: 1mg

Size: 5mg



Specifications

CAS No:
16562-13-3

Formula:
 $C_{19}H_{21}NO_4$

Pathway:
GPCR/G Protein;Neuronal Signaling

Target:
Dopamine Receptor;Dopamine Receptor

Purity / Grade:
>98%

Solubility:
10 mM in DMSO

Alternative Names:
Stepholidine;(-)-Stepholidine;L-SPD

Observed Molecular Weight:
327.37

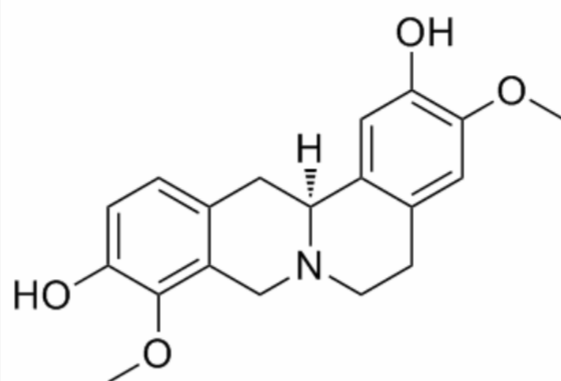
Product Description

L-Stepholidine(Stepholidine) is a naturally occurring chemical compound found in the herb *Stephania intermedia*; L-Stepholidine is a dual D2 receptor antagonist and D1 receptor agonist.

IC50 value:

Target: D2/D1 receptor

L-Stepholidine is used for preventing or treating neural diseases. The neural diseases comprise parkinsonism, schizophrenia and dyskinesia which is produced by L-DOPA or medicine to treat schizophrenia. L-Stepholidine has shown antipsychotic activity in animal studies.



All products are for RESEARCH USE ONLY. Not for diagnostic & therapeutic purposes!