

MTEP (hydrochloride)

Catalog No: tcsc1249



Available Sizes

Size: 10mg

Size: 50mg



Specifications

CAS No:

1186195-60-7

Formula:

$C_{11}H_9ClN_2S$

Pathway:

GPCR/G Protein

Target:

mGluR

Purity / Grade:

>98%

Solubility:

H₂O : 20 mg/mL (84.49 mM; Need ultrasonic)

Alternative Names:

3-((2-Methyl-1,3-thiazol-4-yl)ethyn-yl)pyridine hydrochloride;MTEP

Observed Molecular Weight:

236.72

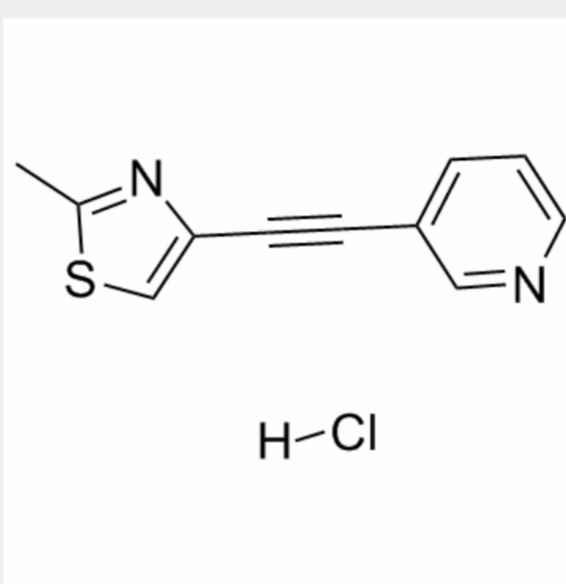
Product Description

MTEP Hcl is a potent, selective and non-competitive mGlu5 antagonist with IC₅₀ and K_i of 5 nM and 16 nM, respectively.

IC50 Value: 5 nM [1]

Target: mGluR5

MTEP occupied mGlu5 receptors in a dose-dependent manner with essentially full receptor occupancy at the highest dose tested (10 mg/kg, i.p.). At doses appropriate for mGlu5 receptor-mediated effects, MTEP significantly reduced fear-potentiated startle and increased punished responding in a modified Geller-Seifter conflict model consistent with an anxiolytic-like profile. MTEP decreased unpunished responding to a lesser extent than diazepam and had no effect on rotarod performance when administered either alone or in combination with ethanol. Repeated dosing with MTEP in this model eliminated the increase in punished responding observed with acute dosing.



All products are for RESEARCH USE ONLY. Not for diagnostic & therapeutic purposes!