

# Dexpramipexole (dihydrochloride)

Catalog No: tcsc1195



## Available Sizes

**Size:** 10mg

**Size:** 50mg



## Specifications

**CAS No:**

104632-27-1

**Formula:**

$C_{10}H_{19}Cl_2N_3S$

**Pathway:**

GPCR/G Protein;Neuronal Signaling

**Target:**

Dopamine Receptor;Dopamine Receptor

**Purity / Grade:**

>98%

**Solubility:**

DMSO :  $\geq 28$  mg/mL (98.50 mM)

**Alternative Names:**

(R)-Pramipexole dihydrochloride;KNS 760704;SND 919CL2X

**Observed Molecular Weight:**

284.25

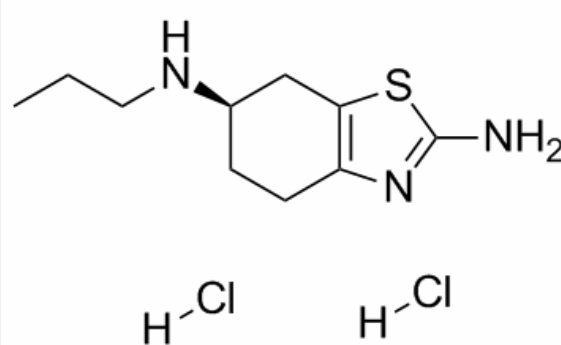
## Product Description

Dexpramipexole 2Hcl(KNS-760704), also known as R-(+)-Pramipexole, is a neuroprotective agent and weak non-ergoline dopamine agonist.

IC50 Value:

Target: Dopamine Receptor

Dexpramipexole has been found to have neuroprotective effects and is being investigated for treatment of amyotrophic lateral sclerosis (ALS). Dexpramipexole reduces mitochondrial reactive oxygen species (ROS) production, inhibits the activation of apoptotic pathways, and increase cell survival in response to a variety of neurotoxins and  $\beta$ -amyloid neurotoxicity. Compared to the S-(-) isomer, Dexpramipexole has much lower dopamine agonist activity.



All products are for RESEARCH USE ONLY. Not for diagnostic & therapeutic purposes!