

Mitiglinide (Calcium)

Catalog No: tcsc1126



Available Sizes

Size: 100mg

Size: 200mg

Size: 500mg



Specifications

CAS No:

145525-41-3

Formula:

$C_{19}H_{24}NO_3Ca_{0.5}$

Pathway:

Membrane Transporter/Ion Channel

Target:

Potassium Channel

Purity / Grade:

>98%

Solubility:

DMSO : 5 mg/mL (14.95 mM; Need ultrasonic)

Alternative Names:

KAD-1229;S21403

Observed Molecular Weight:

334.44

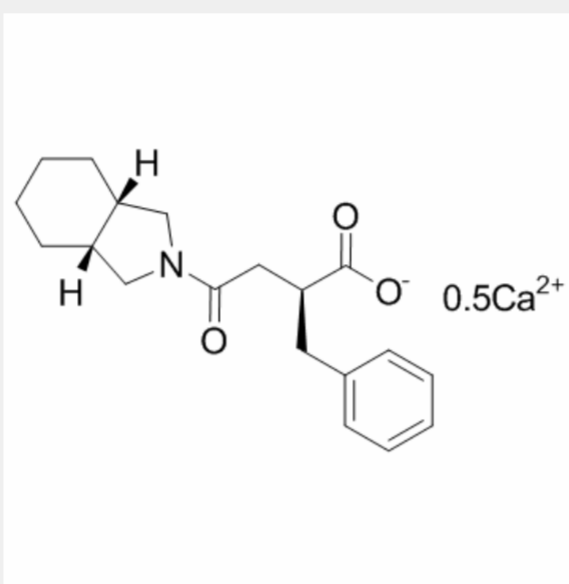
Product Description

Mitiglinide(KAD-1229; S21403) is a drug for the treatment of type 2 diabetes; it is a highly selective KATP channel antagonist.

IC50 value:

Target: KATP channel

Mitiglinide is a hypoglycemic agent that closes adenosine triphosphate (ATP)-sensitive potassium channels (KATP channel s) in the pancreatic β -islet cells. Mitiglinide stimulates insulin secretion by stimulating Ca^{2+} influx.



All products are for RESEARCH USE ONLY. Not for diagnostic & therapeutic purposes!