

Ampalex

Catalog No: tcsc1086



Available Sizes

Size: 10mg

Size: 50mg

Size: 100mg

Size: 200mg



Specifications

CAS No:

154235-83-3

Formula:

$C_{14}H_{15}N_3O$

Pathway:

Membrane Transporter/Ion Channel;Neuronal Signaling

Target:

iGluR;iGluR

Purity / Grade:

>98%

Solubility:

DMSO : ≥ 41 mg/mL (169.92 mM)

Alternative Names:

CX516;BDP 12;Ampakine CX516

Observed Molecular Weight:

241.29

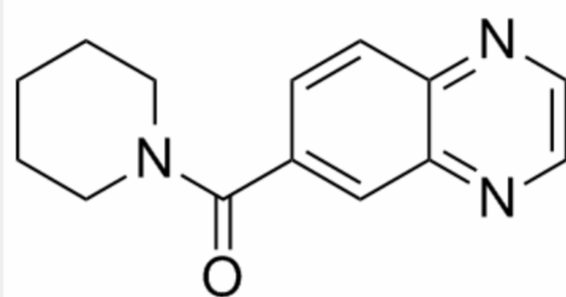
Product Description

Ampalex (Ampakine CX516; CX516; BDP 12) is an ampakine and nootropic that acts as an AMPA receptor positive allosteric modulator as a treatment for Alzheimer's disease, schizophrenia and mild cognitive impairment (MCI).

IC50 value:

Target: AMPA receptor

Ampalex ameliorates functional deficits in AMPA receptors in a hippocampal slice model of protein accumulation. Researches suggest that AMPA receptors may be potential pharmaceutical targets for the treatment of neurodegenerative diseases, and highlights AMPAKines, in particular, as possible therapeutic agents.



All products are for RESEARCH USE ONLY. Not for diagnostic & therapeutic purposes!