

Glibenclamide

Catalog No: tcsc1075



Available Sizes

Size: 1g

Size: 5g



Specifications

CAS No:

10238-21-8

Formula:

$C_{23}H_{28}ClN_3O_5S$

Pathway:

Autophagy;Membrane Transporter/Ion Channel

Target:

Autophagy;Potassium Channel

Purity / Grade:

>98%

Solubility:

DMSO : ≥ 60 mg/mL (121.46 mM); H₂O :

Alternative Names:

Glyburide

Observed Molecular Weight:

494

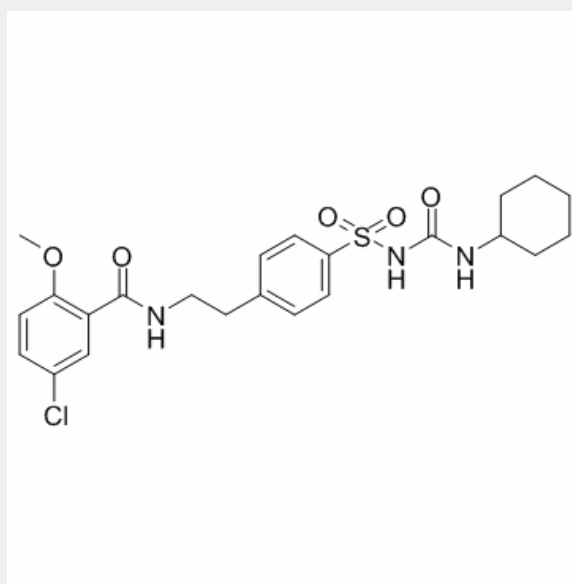
Product Description

Glibenclamide(Glyburide) is a sulfonylurea compound that modulates insulin production.

IC50 value:

Target:

Sulfonylureas bind to ATP-dependent K⁺ channels in beta cells of the pancreas, depolarizing them and stimulating the release of Ca²⁺, which in turn stimulates insulin production. Glibenclamide, a sulphonylurea oral hypoglycaemic agent is a widely used antagonist of cromakalim-activated K⁺ channels in smooth muscle. Binding of Gli to SUR produces the closure of KATP channels and the inhibition of their activity. Glibenclamide is widely used for treatment of type 2-diabetes and it has been signaled as antiproliferative in several tumor cell lines.



All products are for RESEARCH USE ONLY. Not for diagnostic & therapeutic purposes!