

Metoclopramide

Catalog No: tcsc1064



Available Sizes

Size: 100mg

Size: 500mg



Specifications

CAS No:

364-62-5

Formula:

$C_{14}H_{22}ClN_3O_2$

Pathway:

GPCR/G Protein;Neuronal Signaling

Target:

Dopamine Receptor;Dopamine Receptor

Purity / Grade:

>98%

Solubility:

DMSO : ≥ 41 mg/mL (136.76 mM)

Observed Molecular Weight:

299.8

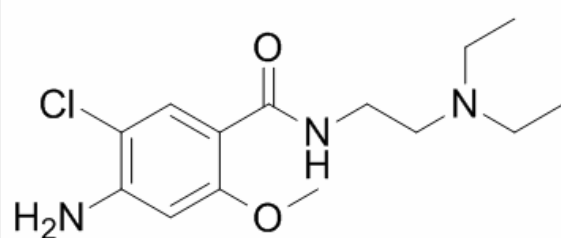
Product Description

Metoclopramide is a dopamine D2 antagonist that is used as an antiemetic.

IC50 Value:

Target: D2 Receptor

Metoclopramide is a dopamine receptor antagonist which has been used for treatment of a variety of gastrointestinal symptoms over the last thirty years. In various countries, metoclopramide is the antiemetic drug of choice in pregnant women. Findings provide reassurance regarding the safety of metoclopramide for the fetus when the drug is given to women to relieve nausea and vomiting during pregnancy. Evidence also supports its use for gastroparesis (poor stomach emptying) and gastroesophageal reflux disease. It appears to bind to dopamine D2 receptors where it is a receptor antagonist, and is also a mixed 5-HT₃ receptor antagonist/ 5-HT₄ receptor agonist.



All products are for RESEARCH USE ONLY. Not for diagnostic & therapeutic purposes!