

## (S) -Timolol (Maleate)

Catalog No: tcsc1028



### Available Sizes

Size: 100mg

Size: 200mg



### Specifications

**CAS No:**

26921-17-5

**Formula:**

$C_{17}H_{28}N_4O_7S$

**Pathway:**

GPCR/G Protein

**Target:**

Adrenergic Receptor

**Purity / Grade:**

>98%

**Solubility:**

DMSO :  $\geq 4.4$  mg/mL (10.17 mM)

**Alternative Names:**

L-714,465 (Maleate);MK 950

**Observed Molecular Weight:**

432.49

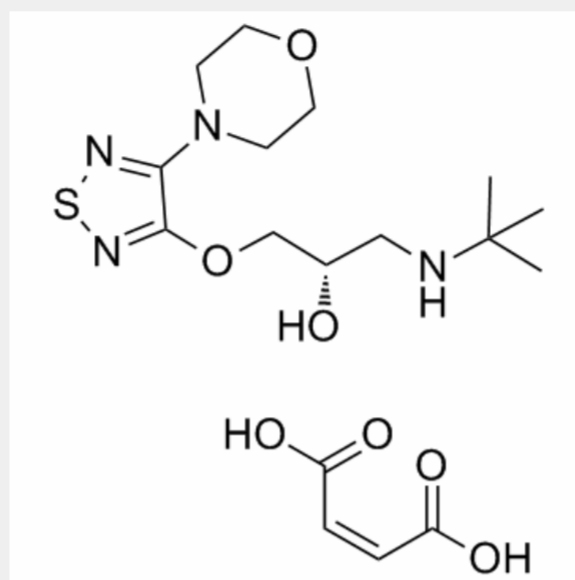
### Product Description

(S)-Timolol maleate, is a potent non-selective  $\beta$ -adrenergic receptor antagonist (K<sub>i</sub> values are 1.97 and 2.0 nM for  $\beta$ 1 and  $\beta$ 2 receptor subtypes respectively).

IC50 Value: 1.97 nM(Ki for  $\beta$ 1); 2.0 nM(Ki for  $\beta$ 2)

Target:  $\beta$ -adrenergic receptor

(S)-Timolol, 50% bioavailability following oral administration. Does not cross the blood brain barrier. Timolol maleate does appear to have some local anesthetic properties in human cornea after chronic use by susceptible individuals.



All products are for RESEARCH USE ONLY. Not for diagnostic & therapeutic purposes!