

Rimegepant

Catalog No: tcsc1027



Available Sizes

Size: 5mg

Size: 10mg

Size: 50mg

Size: 100mg



Specifications

CAS No:

1289023-67-1

Formula:

$C_{28}H_{28}F_2N_6O_3$

Pathway:

GPCR/G Protein;Neuronal Signaling

Target:

CGRP Receptor;CGRP Receptor

Purity / Grade:

>98%

Solubility:

DMSO : 10 mg/mL (18.71 mM; Need ultrasonic and warming); Ethanol : 10 mg/mL (18.71 mM; Need ultrasonic and warming)

Alternative Names:

BMS-927711

Observed Molecular Weight:

534.56

Product Description

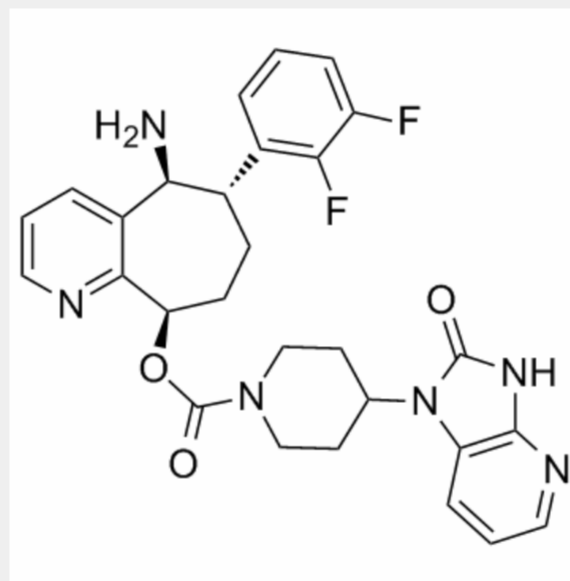
Rimegepant (BMS-927711) is a highly potent, oral calcitonin gene-related peptide (**CGRP**) receptor antagonist with a K_i value of 0.027 nM.

IC50 & Target: K_i : 0.027 nM (CGRP receptor)^[1]

IC50: 0.14 nM (CGRP receptor)^[1]

In Vitro: Rimegepant (BMS-927711) is a full, competitive CGRP receptor antagonist with IC_{50} of 0.14 ± 0.01 nM^[1].

In Vivo: Rimegepant (BMS-927711) has good oral bioavailability in rat and cynomolgus monkey, attractive overall preclinical properties, and shows dose-dependent activity in a primate model of CGRP-induced facial blood flow^[1]. The ratios of the mean AUC (0-24 h) values for Rimegepant (BMS-927711) (60, 100, and 300 mg/kg) in the DBS matrix, compare with plasma, are 0.5-0.6 across all doses in rats. Results from this study suggest a strong correlation of Rimegepant concentrations between rat plasma and rat blood (DBS)^[2].



All products are for RESEARCH USE ONLY. Not for diagnostic & therapeutic purposes!