

Esomeprazole (sodium)

Catalog No: tcsc1025



Available Sizes

Size: 5mg

Size: 10mg

Size: 50mg



Specifications

CAS No:

161796-78-7

Formula:

$C_{17}H_{18}N_3NaO_3S$

Pathway:

Membrane Transporter/Ion Channel

Target:

Proton Pump

Purity / Grade:

>98%

Solubility:

10 mM in H₂O

Alternative Names:

(S)-Omeprazole sodium

Observed Molecular Weight:

367.4

Product Description

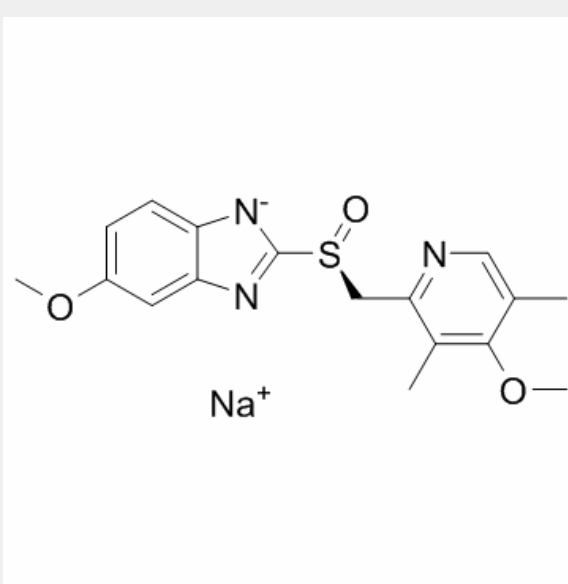
Esomeprazole sodium is a proton pump inhibitor which reduces acid secretion through inhibition of the H⁺ / K⁺ ATPase in gastric parietal cells.

IC50 value:

Target: proton pump

Esomeprazole sodium (Nexium) is the S-isomer of omeprazole and acts as a proton pump inhibitor and gastric antisecretory agent indicated for the short-term treatment of gastroesophageal reflux disease in patients with a history of erosive esophagitis.

Esomeprazole 0.4 and 0.8 mg/mL as the sodium salt in the infusion solutions tested is chemically and physically stable for at least 2 days at room temperature and 5 days under refrigeration.



All products are for RESEARCH USE ONLY. Not for diagnostic & therapeutic purposes!