

(R) -Filanesib

Catalog No: tcsc1017



Available Sizes

Size: 5mg

Size: 10mg

Size: 50mg

Size: 100mg



Specifications

CAS No:

885060-08-2

Formula:

$C_{20}H_{22}F_2N_4O_2S$

Pathway:

Cytoskeleton;Cell Cycle/DNA Damage

Target:

Kinesin;Kinesin

Purity / Grade:

>98%

Solubility:

10 mM in DMSO

Alternative Names:

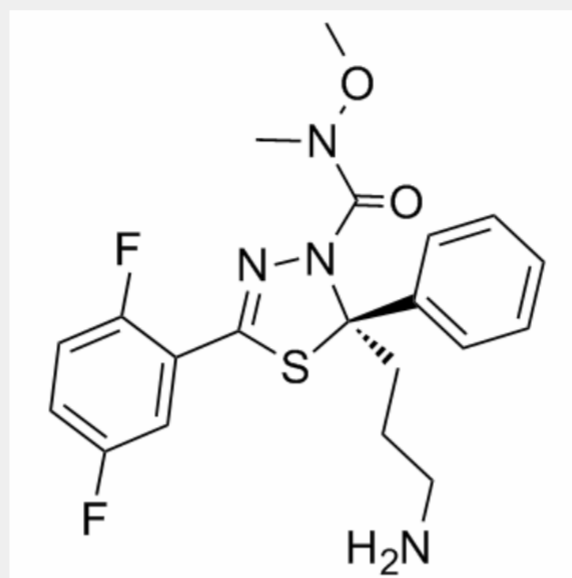
(R)-ARRY-520

Observed Molecular Weight:

420.48

Product Description

(R)-Filanesib ((R)-ARRY-520) is the R-enantiomer of ARRY-520. (R)-Filanesib ((R)-ARRY-520) is a synthetic kinesin spindle protein (**KSP**) inhibitor with **IC₅₀** of 6 nM.



All products are for RESEARCH USE ONLY. Not for diagnostic & therapeutic purposes!