

Repaglinide

Catalog No: tcsc0979



Available Sizes

Size: 50mg

Size: 100mg



Specifications

CAS No:

135062-02-1

Formula:

$C_{27}H_{36}N_2O_4$

Pathway:

Others

Target:

Others

Purity / Grade:

>98%

Solubility:

DMSO : ≥ 50 mg/mL (110.48 mM)

Alternative Names:

AG-EE 388 ZW;AG-EE 623ZW

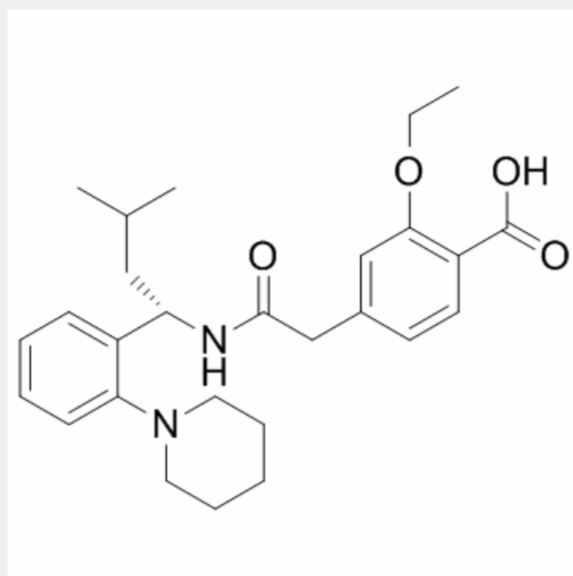
Observed Molecular Weight:

452.59

Product Description

Repaglinide(AG-EE 623ZW) is a carbamoylmethyl benzoic acid (CMBA) derivative, which recently has become available for the treatment of type II diabetes.

In Vitro: Repaglinide(AG-EE 623ZW) is very rapidly absorbed (tmax less than 1 hour) with a t1/2 of less than one hour. Furthermore, repaglinide is inactivated in the liver and more than 90 % excreted via the bile. Repaglinide (1 mg/kg p.o.) was effective (P



All products are for RESEARCH USE ONLY. Not for diagnostic & therapeutic purposes!